

# Hanyang University ERICA

Fall 2024




**HANYANG UNIVERSITY ERICA**  
Education Research Industry Cluster @ Ansan

| Admission Guidelines for International Students




# HANYANG UNIVERSITY ERICA

## World Rankings

QS World University Rankings 2024

**164<sup>th</sup>**

QS Asian University Rankings 2024

**26<sup>th</sup>**

## World University Rankings by Field


**193<sup>rd</sup>** QS Natural Sciences 2023

**106<sup>th</sup>** QS Engineering and Technology 2023

**173<sup>rd</sup>** QS Social Sciences & Management 2023

**215<sup>th</sup>** QS Arts & Humanities 2023

## Joong-Ang Daily Korean University Rankings (2023)

**14<sup>th</sup>**

Ranked among TOP 15 universities,  
8 consecutive years!

## Achievements



Hanyang University has officially received IEQAS(International Education Quality Assurance System) certification from the Ministry of Education for 12 consecutive years since 2012. Over 2,500 international students are studying at Hanyang University ERICA. (as of 2023)

## Support Programs for International Students

Counseling Service for International Students

Hanyang is the first university in Korea to launch a Counseling Psychology Program; in which two dedicated counselors are available to assist international students and offer counseling services in 3 languages: Korean, English, and Chinese



### Buddy & Tutoring Programs

#### • Buddy Program

In this program, each international student is paired with one Hanyang student who provides assistance to help with adjusting to the new environment. Moreover, international students can participate in various campus events and activities to become more acclimated to life in Korea.

#### • Tutoring Program

International degree students who might experience difficulties with courses in their major can request assistance from the Office of International Affairs(OIA) or their department office. A Hanyang student will be assigned to meet one-to-one with the international student or in a group setting.



### On Campus Health Care Center

Students can always visit the Hanyang Health Care Center located on campus for basic medication, trauma treatment, or first aid in case of an emergency. The center is in charge of promoting students health, and in addition to providing free basic treatment and medication, health-related programs are offered such as health counseling, smoking cessation clinics, and body composition tests.



### Facilities for Muslim Students

The Hanyang University ERICA Campus has been active in its efforts to provide resources and facilities to better accommodate our growing Muslim population. The campus offers prayer rooms, a separate kitchen, and various kinds of special support even during the Ramadan period. (\*See page 39 for facility photos)

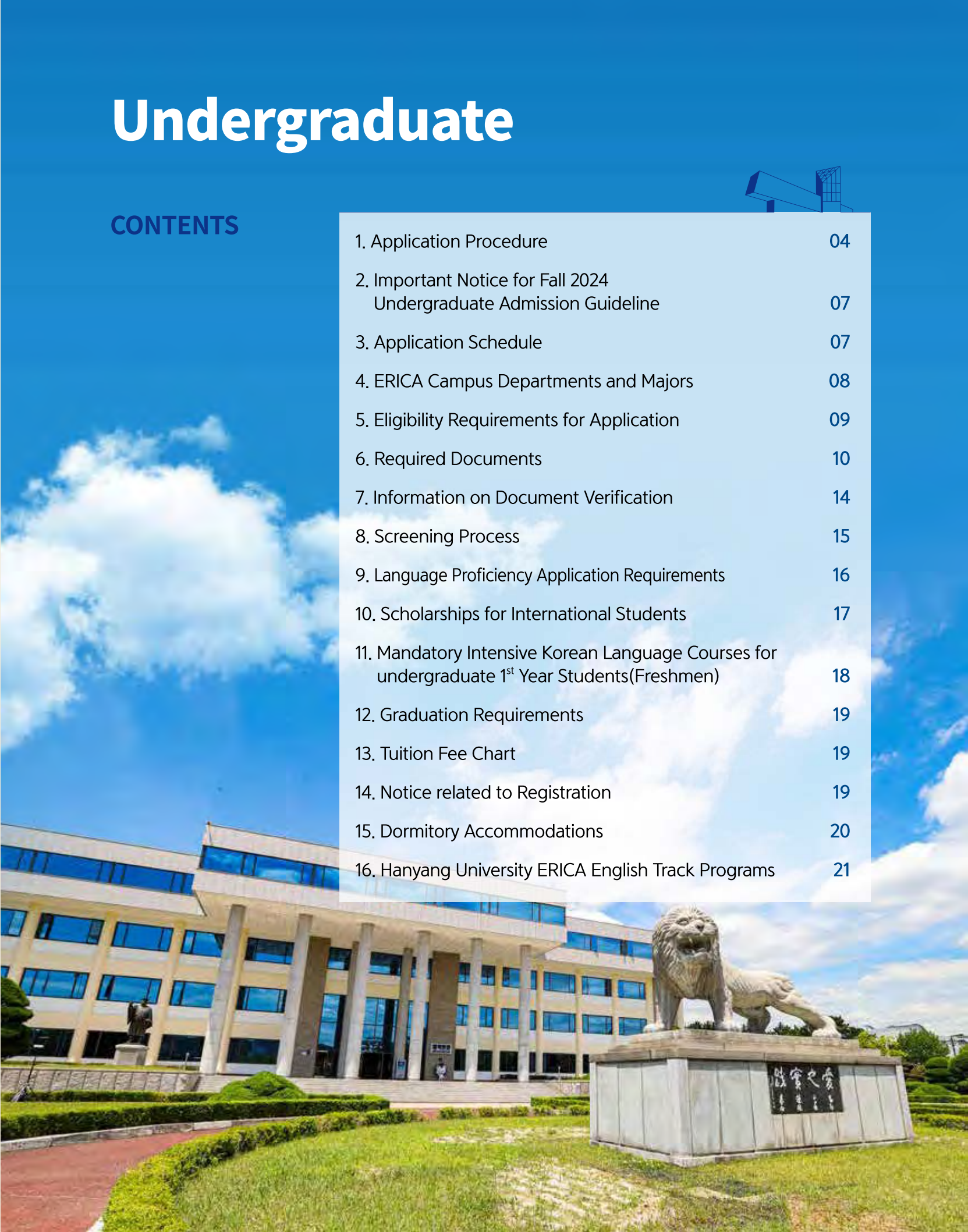
## Center for University-Industry Cooperation

- National & private research centers are located at ERICA
- 2,000 researchers from 200 venture companies on campus
- 1,500 ERICA affiliated nearby companies off campus
- ERICA is the nation's first university to launch the 4+1 Internship Program: Optional 1-2 semester internship offered at ERICA with affiliated companies. More than 1,000 students participate every year.

# Undergraduate

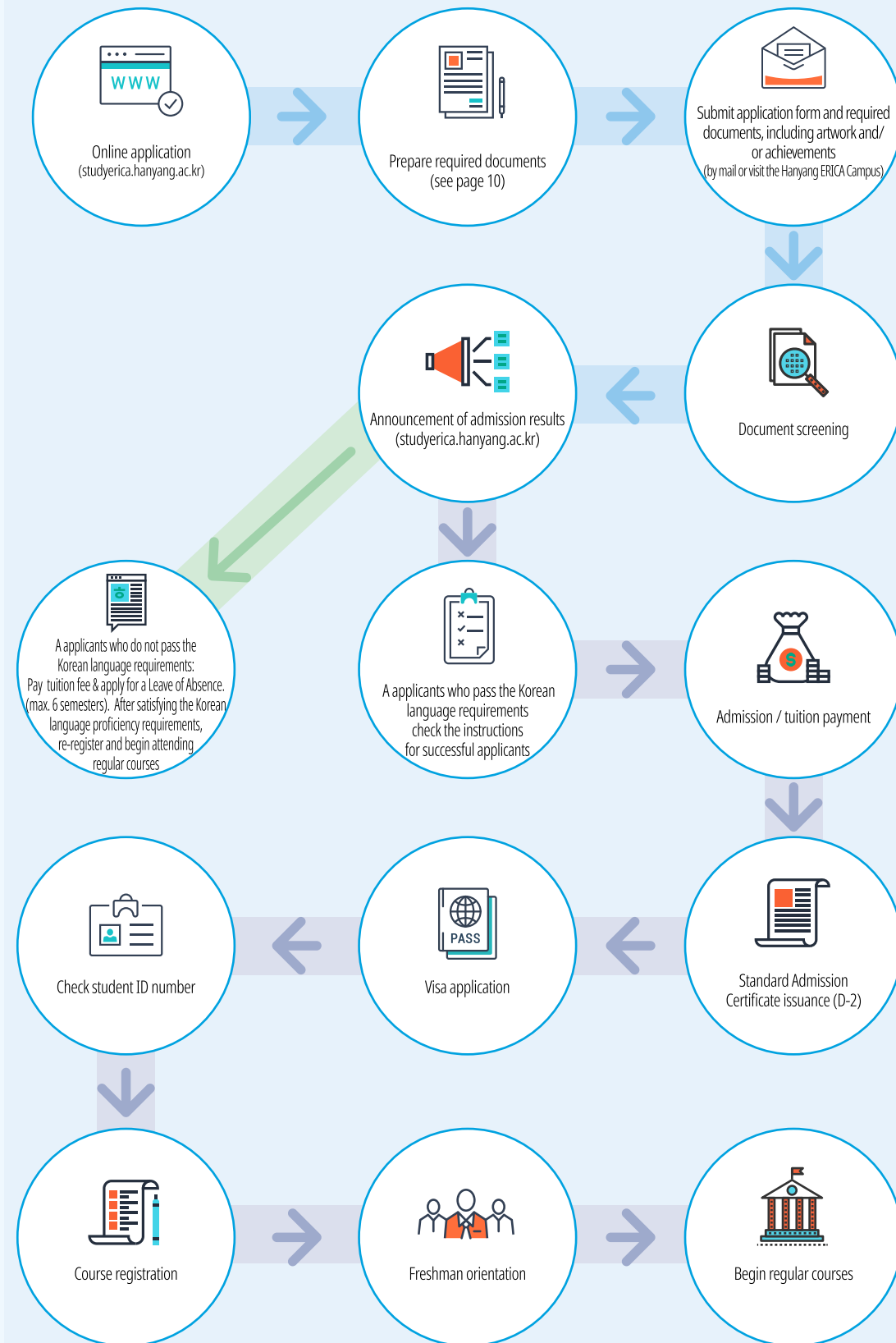
## CONTENTS

1. Application Procedure	04
2. Important Notice for Fall 2024 Undergraduate Admission Guideline	07
3. Application Schedule	07
4. ERICA Campus Departments and Majors	08
5. Eligibility Requirements for Application	09
6. Required Documents	10
7. Information on Document Verification	14
8. Screening Process	15
9. Language Proficiency Application Requirements	16
10. Scholarships for International Students	17
11. Mandatory Intensive Korean Language Courses for undergraduate 1 <sup>st</sup> Year Students(Freshmen)	18
12. Graduation Requirements	19
13. Tuition Fee Chart	19
14. Notice related to Registration	19
15. Dormitory Accommodations	20
16. Hanyang University ERICA English Track Programs	21



## Application Procedure

### Undergraduate



## Application Procedure

### Submission of Online Application

※ Admission applications are ONLY accepted online.

1. Click on the application website link on the ERICA international students admission homepage ([studyerica.hanyang.ac.kr](http://studyerica.hanyang.ac.kr)).
2. Register and log in on the application website.
3. Read the important notes and guidelines carefully.
4. Fill-out the application form and upload a passport-sized photo.
5. Review your application thoroughly and pay the application fees.
6. Print-out the Application Form, Official Authorization for Inquiry into Enrollment and Academic Credit, and Application Verification slip after payment.
7. Submit the printed application materials in the appropriate order within the designated period to the Office of International Affairs ERICA (see page 10-13 required submission document list).

\*This procedure is for applying to one major (No. 1 to 7). For multiple applications, after the first application, applicants must fill-out the application and pay the application fee one more time. You can print out the documents of the 1<sup>st</sup> and 2<sup>nd</sup> choice major and submit them together. (See page 5-6)

\*Please input your data (must match information on applicant's passport) as accurately as possible for the online application and remember your examination number.

\*The online application deadline is 5:00pm (UTC +9:00 Seoul Standard Time), and applicants must complete all application procedures including the payment of the application fee before the deadline.

\*The application fee must be paid for the online application to be printed. After payment is made an application number will be assigned, which means the application has been completed. Once the application fee has been paid, a completed application cannot be cancelled for any reason, nor can the applied-for major be changed.

\*In the case of any omissions on the admission application, input error, change of contact information, and/or lost contact with the applicant, the application may be rejected. The applicant is solely responsible for disqualification caused by any of the aforementioned. Applicants must use gmail, hotmail, or a Korean email account (Chinese email accounts may not be able to receive announcement emails).

\*If the personal information (including personal names) or contact information on the application is changed, applicants must immediately notify the Office of International Affairs by email [studyerica@hanyang.ac.kr](mailto:studyerica@hanyang.ac.kr)

\*If the uploaded picture is not the applicant's own picture or does not meet the set standard, the application will be rejected.

\*The application fee (including application site fee) is: KRW138,000 for Engineering Sciences, Computing, Science and Convergence Technology, Languages and Cultures, Communication, Business and Economics / Design, Sports and Arts it is: KRW210,000.

\*If payment is made through PayPal, UnionPay, or Alipay, additional transaction fees may be charged.

### Dual Application for Students Applying for an Undergraduate Program

[Students who are applying to an undergraduate program can apply to two departments/divisions at the ERICA Campus.](#)

#### • Criteria

- Students can apply for two majors at the ERICA Campus.

※ Multiple applications for 2 majors within the Dance and Performing Arts or Contemporary Music Divisions are not permitted. (See p.8 Department and Major – blue colored box)

※ Multiple applications are permissible for 2 divisions or departments. (See p.8 Department and Major – white, blue, green colored boxes)

※ Multiple applications for 2 majors within 1 department (see p.8 light green box) are permitted.



Application Procedure

Undergraduate

- For example:

Applications	1 <sup>st</sup> choice	2 <sup>nd</sup> choice`	Permitted or not
Multiple applications for 2 majors within the Dance and Performing Arts or Contemporary Music Divisions	Contemporary Music-Vocal Major	Contemporary Music-Composition Major	Not permitted
Multiple applications are permissible for 2 divisions or departments	Artificial Intelligence	Korean Language and Literature	Permitted
	Artificial Intelligence	Contemporary Music-Composition Major	Permitted
	Contemporary Music-Composition Major	Architecture Department Architecture Major	Permitted
Multiple applications are permissible for 2 majors within 1 department	Media, Culture, and Design Technology Department - Media Technology Major	Media, Culture, and Design Technology Department - Culture Technology Major	Permitted

- The ERICA Campus and Seoul Campus recruit undergraduate students separately.
- Students who apply to the Hanyang University Seoul Campus can also apply for two majors at the ERICA Campus.
- In the case of applying to both the Seoul and ERICA Campuses, the required documents should be submitted separately to each respective campus.
- If an applicant for the ERICA Campus submits a document or artwork to the Seoul Campus, it will be considered as non-submitted.

• How to “dual-apply”

Fill out online application for 1<sup>st</sup> major of choice → Pay the admission fee (including any extra fees) → Fill out online application for the 2<sup>nd</sup> major of choice → Pay the extra fee

- If there is a difference between the application fees for the 1<sup>st</sup> and 2<sup>nd</sup> major, the difference and the extra fees of the 2<sup>nd</sup> major must be to be paid together.

- Example of payment of fees

Category	1 <sup>st</sup> major	2 <sup>nd</sup> major	Fees (KRW)
Apply for one major	Contemporary Music- Composition	-	₩210,000
	Artificial Intelligence	-	₩138,000
Dual-application	Artificial Intelligence	Korean Language and Literature	1 <sup>st</sup> major ₩138,000 2 <sup>nd</sup> major ₩8,000
	Artificial Intelligence	Contemporary Music- Composition	1 <sup>st</sup> major ₩138,000 2 <sup>nd</sup> major ₩80,000
	Contemporary Music- Composition	Design - Jewelry and Fashion Design	1 <sup>st</sup> major ₩210,000 2 <sup>nd</sup> major ₩10,000
	Contemporary Music- Composition	Artificial Intelligence	1 <sup>st</sup> major ₩210,000 2 <sup>nd</sup> major ₩8,000

\*Applicants cannot change their 1<sup>st</sup> and the 2<sup>nd</sup> major choices after the application fee has been paid.

• Process of selection

Applicants will undergo a screening process to determine their eligibility based on an evaluation of the documents submitted and the results of their Admissions Test. Applicants who do not gain admission to their 1<sup>st</sup> choice major will automatically become candidates for admission to their 2<sup>nd</sup> choice major.

• Results

Application results can be checked on the ERICA OJA website by entering the applicant's birth date and application number. Applicants for dual application (applying for 2 majors) must check both application results.

\*Please input info(must match the information on applicant's passport) as accurately as possible. And please make note of the application number.



Important Notice  
for Fall 2024  
Undergraduate  
Admission  
Guideline

• Announcement of the abolition of the online Korean language test

From the fall semester of the 2024 academic year (application for admission starting from March 2024), the Hanyang online Korean language test will be abolished. In order to pass the Korean language standard, applicants must obtain TOPIK(IBT included) or Hanyang University Institute of International Education (IIE) scores.

Application  
Schedule

Procedure	Fall 2024	Spring 2025	Note
Guideline Announcement	February 1, 2024	August 2, 2024	
Online Application	March 4, 2024 10:00~ April 15, 2024 5:00pm	September 2, 2024 10:00~ October 14, 2024 5:00pm	Check the ERICA international students admission website ( <a href="http://studyerica.hanyang.ac.kr">http://studyerica.hanyang.ac.kr</a> ) ※ Changes in major or cancellation is not permissible after online application
Submit Required Documents	March 4, 2024 ~April 22, 2024	September 2, 2024 ~October 16, 2024	- Refer to required documents (see pages 10-13) - Submit by mail or visit directly - Must submit before the deadlin and mailed application is olny accepted with the postmark showing a date no later than the last day of the documents submission period [Address] Office of International Affairs, 3 <sup>rd</sup> floor, Student Welfare Center, Hanyang University ERICA Campus, 55, Hanyangdaehak-ro, Sangnok-gu, Ansan-si, Gyeonggi-do, 15588, Republic of Korea ※ The delivery status can be checked with the delivery number when sending via post office mail. The applicant is responsible if the document does not arrive by the deadline (despite possible delivery delay and/or delivery error)
Result Annoucement	June 14, 2024	December 11, 2024	For the results, students must check the Office of International Affairs ERICA website themselves. ( <a href="http://studyerica.hanyang.ac.kr">http://studyerica.hanyang.ac.kr</a> )
Online Korean Language Test	Abolished		
Tuition Payment	To be announced later		Refer to the guidelines for Incoming ERICA undergraduate students (to be sent by email to the email address shown on the online application form)
Standard Admission Certificate Issuance	-		Scheduled to be issued only to those who apply for it
Issuance of Student ID Number and Course Registration	-		To be sent by email to the email address shown on the online application form
International Student Orientation	August 29, 2024	February 26, 2025	To be announced
Semester Begins	September 2, 2024	March 3, 2025	

- All schedules are based on Korean standard time(KST). Those who fail to follow KST and apply/submit late may be disqualified.
- Those who do not submit documents will be adversely affected during the review process, The last opportunity for accepted mailed materials will be with the postmark showing a date no later than the last day of the document submission deadline.
- The above schedule is subject to change due to internal circumstances, and all notifications for admission, such as schedule changes, will be announced on the Office of International Affairs ERICA website. (No direct 1:1 announcement will be sent)



ERICA Campus  
Departments and  
Majors

Undergraduate

※Please refer to the College/Department information on the website (studyERICA.hanyang.ac.kr) for detailed information about majors at the ERICA Campus

Field	College	department ●	division ● ●	Major/Note
Engineering	Engineering Sciences	Architecture (5 yrs.)		
		Architectural Engineering (4 yrs.)		
		Civil and Environmental Engineering		
		Transportation and Logistics Engineering	※1 <sup>st</sup> year students (freshmen) admission only	
		Electrical Engineering		
		Materials Science and Chemical Engineering	※1 <sup>st</sup> year students (freshmen) admission only	
		Mechanical Engineering	※1 <sup>st</sup> year students (freshmen) admission only	
		Industrial and Management Engineering	※1 <sup>st</sup> year students (freshmen) admission only	
		Bionano Engineering	※1 <sup>st</sup> year students (freshmen) admission only	
		Robotics	※1 <sup>st</sup> year students (freshmen) admission only	
Engineering	Computing ※Freshmen are not permitted to apply for majors (such as Computer Technology or Media Technology) but can apply to departments (such as Computer Science or Media, Culture, and Design Technology or Artificial Intelligence.)	Computer Science		
		Media, Culture, and Design Technology		Media Technology
				Culture Technology
		Artificial Intelligence		Design Technology
Natural Science	Science and Convergence Technology	Mathematical Data Science		
		Applied Physics		
		Medical and Life Science		
		Photonics and Nanoelectronics		
		Chemical and Molecular Engineering		
		Marine Science and Cnvergence Engineering		
Humanities	Languages and Cultures	Korean Language and Literature		
		Cultural Anthropology		
		Culture Contents		
		Chinese Studies		
		Japanese Studies		
		English Language and Culture		
		French Studies		
Social Sciences	Communication	Advertising and Public Relations		
		Media and Social Informatics		
Social Sciences	Business and Economics	Economics		
		Economics		English Track
		Business Administration		
		Business Administration		English Track
Fine Arts	Design	Jewelry and Fashion Design		
		Integrate Design		Industrial Design, Communication Design
		※Freshmen should apply to the Integrate Design Department		(Transfer students should apply for these majors)
		Interactive Media Design		
Physical Education	Sports and Arts	Sport Science		Sport Culture
Fine Arts		※Freshmen are not permitted to apply for majors		Sport Coaching
		Dance and Performing Arts		Contemporary Dance(Street Dance)
Music		Contemporary Music		Creative Dance (Ethnic Dance)
				Vocal
				Composition
				Bass
				Guitar
				Drum
		Piano		
			Brass (Saxophone, Trumpet, Trombone)	

- The courses listed above are available for international students, and a fixed number of students are selected for each department/division and major.
- Courses are subject to change and will be confirmed before the semester begins. Thus, please check the availability of your desired courses prior to applying online.
- International students should decide upon their majors carefully since they are not allowed to change majors after admission. Students must reapply for admission to Hanyang University if a change of major is desired.
- Applicants can select up to 2 departments and apply for 1 or 2 majors.
- Applicants can apply for English tracks when they submit their certificates of English language proficiency (Korean language proficiency is not required). All courses are taught in English in the English track.
- Multiple applications for 2 majors within Dance and Performing Arts or the Contemporary Music Division are not permitted. (See p.8 Department and Major-blue colored boxes)

ERICA Campus  
Departments and Majors

Eligibility  
Requirements for  
Application

- Multiple applications are permissible for 2 divisions or departments. (See p.8 Department and Major-white, blue, green colored boxes)
- Multiple applications are permissible for 2 majors within 1 department. (See p.8 Department and Major-green colored boxes)

- For example:

Applications	1 <sup>st</sup> choice	2 <sup>nd</sup> choice`	Permitted or not
Multiple applications for 2 majors within Dance and Performing Arts or Contemporary Music Division	Contemporary Music -Vocal Major	Contemporary Music - Composition Major	Not permitted
Multiple applications are permissible for 2 divisions or departments	Artificial Intelligence	Korean Language and Literature	Permitted
	Artificial Intelligence	Contemporary Music - Composition Major	Permitted
	Contemporary Music - Composition Major	Architecture Department Architecture Major	Permitted
Multiple applications are permissible for 2 majors within 1 department	Media, Culture, and Design Technology Department - Media Technology Major	Media, Culture, and Design Technology Department - Culture Technology Major	Permitted

Important Notice Related to Eligibility

- If applicants are found to have falsified any documents particularly related to the eligibility requirements, their admission will be immediately cancelled even if admission was previously granted.
- If the eligibility requirements for nationality or academic background are not met, admission will be cancelled.
- In the process of document screening, the OIA can request additional documents if deemed necessary.
- For English track applicants, submitting an English language certificate corresponding to the admission criteria is a prerequisite for admission application.
- **If the applicants or their parents possesses Korean nationality or dual nationality, the student needs to apply as “Citizens outside or foreigner” on the admission website. (ERICA admission website: <http://goERICA.hanyang.ac.kr/> phone number: 1577-2876)**

1 <sup>st</sup> Year Students (freshmen)	<p><b>1. Nationality: International students with foreign nationality and whose parents both have foreign nationality</b></p> <ul style="list-style-type: none"><li>- If the student or his/her parents have dual citizenship that include Korean nationality, the application will not be accepted.</li><li>- Students who acquired foreign nationality or renounced (lost) Korean nationality: Both student and parents must have acquired foreign nationality and no longer possess Korean nationality before the student entered high school.</li><li>- If an applicant's family relationship needs to be confirmed (parents' divorce, remarriage, death, missing, adoption, etc.), applicants must submit authenticating documents as evidence, e.g. certificate of divorce, certificate of family relationship, certificate of single parent, child custody, death certificate, certificate for missing persons, adoption certificate etc.</li><li>- If the applicant's father or mother remarries a Korean national, it will be necessary to submit a family relationship certificate of the Korean spouse who remarried the applicant's father or mother.</li><li>- If the student or his/her parents become nationalized Korean citizens on/after the date application started, the application will not be accepted.</li></ul> <p><b>2. Academic background: Applicants who graduated or are expected to graduate from high school</b></p> <ul style="list-style-type: none"><li>-Must have completed elementary, middle, and high school curricula equivalent to the Korean academic system.</li><li>- Home-schooling, cyber learning, adult education, and/or a high school graduate equivalency test for self-study in Korea are not recognized.</li><li>- Students who graduated or are expected to graduate from a 5year education school in China can apply for admission (quitting after completing only three years, is not recognized as graduating from high school).</li><li>- Students who graduated or are expected to graduate with an IB Diploma, A-Level can apply for admission.</li></ul>
Transfer	<p><b>1. Nationality : International students with foreign nationality whose parents both have foreign nationality</b></p> <ul style="list-style-type: none"><li>- If the student or his/her parents have dual citizenship that includes Korean nationality, the application will not accepted.</li><li>- Those who have acquired foreign nationality or renounced Korean nationality (lost Korean citizenship): Students and their parents must have acquired foreign nationality or no longer possess Korean nationality for more than 3 years before from the application start date.</li><li>- If the applicant's family relationship needs to be confirmed (parents' divorce, remarriage, death, missing, adoption, etc.), the applicant must submit authenticating documents as evidence. e.g. certificate of divorce, certificate of family relationship, certificate of single parent, child custody, death certificate, certificate for missing persons, adoption certificate etc.</li><li>- If the applicant's father or mother remarries a Korean national, it will be necessary to submit a family relationship certificate of a Korean spouse who remarried the applicants's father or mother.</li><li>- If the student or his/her parents become nationalized Korean citizens on/after the date application started, the application will not be accepted.</li></ul> <p><b>2. Academic background :</b></p> <p><b>To transfer in their 3<sup>rd</sup> year, students are expected to complete or have completed at least 2 years (4 regular semesters, excluding summer and winter sessions) at a four-year university at home and/or abroad and have earned all the credits equivalent to 2 or more years of courses.</b></p> <p><b>To transfer in their 2<sup>nd</sup> year, students who are expected to complete or have completed at least 1 years (2 regular semesters, excluding summer and winter sessions) at a four-year university at home and/or abroad and have earned all the credits equivalent to 1 or more years of courses.</b></p> <ul style="list-style-type: none"><li>- Students who attended a 2--3-year program at a community college must graduate (with an associates degree or diploma equivalent to an associates degree) from the school or must be on the list of candidates for graduation.</li><li>- Students who attended colleges which are not officially approved by the Korean Ministry of Education are not eligible to apply for transfer admission.</li><li>- Admission will be cancelled if students have not completed at least 4 semesters at their university.</li><li>- Credits are transferred according to those the students earned at their university, and the maximum credits transferable may vary with each major.</li><li>- Academic qualifications such as family study, online study, adult education, General Equivalent Diploma(GED), etc. are not recognized.</li></ul> <p><b>3. Major : International students should apply for majors at Hanyang University that are relevant to their previous university's major.</b></p>

Required Documents

Undergraduate

1<sup>st</sup> Year Student (Freshmen) Admission

Notes for required documents

- **All submitted materials will not be returned** Since students still need to apply for a visa after being admitted, students are recommended to make multiple copies when preparing the admission materials.
- **All of the submitted documents must be originals (except when a copy is allowed to be submitted (see note section below))**
- All documents must be issued within one year from the date the application begins. (excluding language transcripts)
- If documents are in Korean or English, or the same content is translated in English or Korean along with the original language, no notarization of the translation will be required.
- All the documents must be submitted by mail or direct visit to the OIA. The Documents submitted by email will be considered non-submitted and will be rejected.
- If a student has not met the admissions qualifications or is confirmed to have been admitted through the following illegal or unjustifiable means, admission will be canceled regardless if it is before or after admission.
  - 1) Fake, tampered with, or submittal of false data
  - 2) Having another person take the Korean language test, dishonestly submitting artwork or claiming achievements on behalf of the applicant
  - 3) Other acts that unfairly affect fair management in selecting students to enter the university
  - 4) If the applicant's actual academic qualifications do not match the submitted materials
- Applicants are responsible for supplying correct contact information on the application documents. Failure to do so may result in the inability of OIA to contact the applicant, which in turn can lead to disqualification.
- Successful applicants who are scheduled to graduate high school, university, community college, or four-year university attending students who have not submitted the original copy of final academic certificates, must submit the original final academic certificates with xuexinwang confirmation, apostille certification, and consul confirmation to the OIA within the tuition deadline. If not submitted, the standard admission certificate will not be issued, and university admission can be canceled.
- Original final academic certificates and transcript with xuexinwang confirmation, apostille certification and consul confirmation must be submitted by the deadline for submitting documents. However, if document cannot be submitted within the application period, contact the OIA in advance and submit the documents as a notarized translation or a notarized translation copy first, and later submit the relevant documents during the additional submission period according to OIA's guidance.

A : Korean/English Translation notarization required(O) or not(X) B : Apostille/Consul's certificate Required(O) or not(X)			
No	Required Documents	A B	Notes
1	Single copy of the Application Form		Must be printed out after online application through the website of the Office of International Affairs, and application fee must be paid See Submission of Online Application on page 5 for detailed information
2	Single copy of School Information Confirmation form official authorization for Inquiry into Enrollment and Academic Credit		Automatically printed when printing out the online Application Form
3	Copy of college entrance examination transcript or graduation exam transcript	o x	Only for holders (Chinese students can choose to submit the transcript for the HuiKao or college entrance examination.)
4	Official high school (expected) graduation certificate	o o	<p>&lt;South Korea high school graduates&gt; Original NEIS document (no translation notarization nor authentication required)</p> <p>&lt;International high school graduates – except Korea and China&gt; Graduation certificate or expected graduation certificate: Apostille Certification or Consul Confirmation (Korean or English)</p> <p>&lt;Chinese high school Graduates - Regular high School&gt; - Original copy of academic certification report from CHSI (English)</p> <p>&lt;Chinese high school graduates - Regular specialized high school, vocational high school, secondary professional school, etc.&gt; ① When submitting the online education certificate - Graduation certificate issued by the local education department (the authenticity can be checked online) + Apostille Certification ② When submitting a certificate of academic qualifications processed offline - Fill out and submit the "School Information Confirmation Form" (download it when applying for admission) - Graduation certificate issued by the local education department + Apostille Certification - Graduation certificate issued by the school: which can be verified for authenticity by education authorities such as a provincial ministry of education, city ministry of education + Apostille Certification</p> <p>&lt;Chinese high school graduates - Technical and Industrial Schools&gt; - Online query results on the official website of the Ministry of Human Resources and Social Security (<a href="http://www.mohrss.gov.cn/">http://www.mohrss.gov.cn/</a>) + copy of graduation certificate + Apostille Certification</p> <p>&lt;Chinese high school graduates - Private Schools&gt; - Graduation certificate issued by the school + Apostille Certification - Copy of school establishment license (business unit certificate of incorporation or private school operating license, no notarization required)</p>

Required Documents

A : Korean/English Translation notarization required(O) or not(X) B : Apostille/Consul's certificate Required(O) or not(X)			
No	Required Documents	A B	Notes
4	Official high school (expected) graduation certificate	o o	<p>&lt;Chinese high school pre-graduates&gt; - Pre-graduation certificate issued by the school + confirmation from Apostille Certification (Submit graduation materials that match the type listed above directly after graduation) - Graduation certificate can be temporarily replaced by "school-issued pre-graduation certificate + confirmation from the Korean consulate in China" before graduation - Documents other than graduation certificates must be submitted normally (School Information Confirmation Form, business unit certificate of incorporation or private school running license, etc.) ※ Upon graduation, submit an additional graduation certificate matching applicant's school type</p>
5	Official high school transcripts, last 3-years	o o	<p>Pre-graduates must submit additional transcripts for the entire academic year including the last semester immediately after graduation. Failure to submit will result in disqualification of admission</p> <p>&lt;South Korea high school graduates&gt; Submission of original copy (no translation notarization and authentication required)</p> <p>&lt;International high school graduates – except Korea &gt; Apostille Certification or consul confirmation of transcript (Korean or English) ※ Submit scores converted to a 100-point scale.</p>
6	Proof of high school's maximum score criteria for each subject	x x	Proof of school's maximum score criteria for each subject according to the school regulations, plus a Korean or English translation (no translation notarization is required)
7	Copies of passports and ID card (applicants and his/her parents)	o x	<p>&lt;Applicants who are not Chinese citizens&gt; - Applicants: A copy of passport must be submitted - Parents: A copy of passport / ID card that can identify one's nationality (driver's license not accepted) must be submitted</p>
		x x	<p>&lt;Chinese applicants&gt; - Applicants: A copy of passport and ID card (driver's license not accepted) must be submitted - Parents: A copy of passport / ID card that can identify one's nationality (driver's license not accepted) must be submitted</p>
8	Official document indicating parent-child relationship between the applicant and his/her parents	o x	<p>&lt;Applicants who are not Chinese citizens&gt; - Original copy of birth certificate or certificate of family relationship</p> <p>&lt;Chinese applicants&gt; - Certificate of family relationship + notarized translation, copy of household registry + translated copy of household registry - Must attach a copy of household registry that has all the information updated within 1 year from the date the application started (parents and the student must be included). A Korean or English translation is also required (but translation notarization is not necessary) ※ If the applicant's family relationship needs to be confirmed (parents' divorce, remarriage, death, missing, adoption, etc.), the applicant must submit authenticated documents as evidence, e.g. certificate of divorce, certificate of family relationship, certificate of single parent, child custody, death certificate, certificate regarding missing persons, adoption certificate, etc.</p>
9	Certificate authenticating bank balance of KRW 20,000,000 equivalent or more	o x	<ul style="list-style-type: none"><li>• Applicants can submit a copy during the document submission period and successful applicants must submit the original before applying for certificate of admission.(copy of bankbooks is not allowed)</li><li>• Other currency that is equivalent to KRW 20,000,000 is possible (e.g. USD 15,500, RMB 111,100, etc.)</li><li>• Certificate of balance with expiration date must be valid until the date after classes begin</li><li>- Adults who have completed alien registration and stay in Korea must submit a certificate of balance issued by a Korean bank in their own name</li><li>- Uzbekistan applicants staying in Uzbekistan can only submit a Uzbekistan KDB bank certificate of balance</li></ul>
10	Certificate of Korean language proficiency (choose one of the two) - Certificate of TOPIK score(Original TOPIK, TOPIK IBT) - Certificate issued by the Hanyang Institute of International Education ※Applicants for the English track only need to submit if they have a Korean language certificate	x x	<p>Certificate of Korean language proficiency (choose one from the two below) (Department of Architecture applicants must submit a TOPIK level 5 or above certificate)</p> <ul style="list-style-type: none"><li>- Certificate of TOPIK score: level 3 or above</li><li>- Certificate and transcript issued by the Hanyang Institute of International Education (HIIIE): level 3 or above</li><li>- Validity of the HIIIE Certificate: Certificate within two years from the registration start date</li><li>※ Applicants who apply for the English Track programs do not have to submit</li></ul>
11	Certificate of English language proficiency (TOEFL, IELTS - choose one of the two) ※Non English track applicants only need to submit if they have an English language certificate	x x	<ul style="list-style-type: none"><li>• Expiration date : after the starting date of the online application</li><li>• Applicants for English Track programs must submit. TOEFL IBT 80 or higher, IELTS 5.5 or higher</li><li>• Applicants for Korean programs (all courses except those in the English Track) must submit it.</li><li>※ Applicants who apply for English Track programs from English speaking countries (USA, England, Ireland, Canada, Australia, New Zealand) are exempt from submitting the certificate of English proficiency.</li></ul>
12	Artwork or achievements (only for those who apply for Design, Sports and Arts)	x x	<ul style="list-style-type: none"><li>• If the 1<sup>st</sup> and 2<sup>nd</sup> choice of majors are both within the College of Design, the artworks or assignments only need to be submitted once (refer to page 16)</li><li>• Admitted applicants of the local Chinese screening do not have to submit artwork nor assignment. (However, for those who would like to apply for the Hanyang International Scholarship Program, artwork and assignment must be submitted (same as the other applicants))</li></ul>
13	Proof of nationality renunciation (only for those who were Korean citizens and changed nationality)	x x	<p>Proof of renunciation of Korean citizenship with authorized date and other information indicated (both applicant and his/her parents)</p> <ul style="list-style-type: none"><li>- explanation for nationality and date must be written</li></ul>
14	Other documents	o x	<p>Evidence of activities during the high school period (awards, certificates, internship certificates, school records, etc.)</p> <p>※ If there is a semester without grades, submit the relevant explanation letter.</p>



Required Documents

Undergraduate

Required Documents – Transfer

Notes for required documents

- **All submitted materials will not be returned** Since students still need to apply for a visa after being admitted, students are recommended to make multiple copies of the materials when preparing the admission materials.
- **All of the submitted documents must be originals (except when a copy is allowed to be submitted (see note section below))**
- All documents must be issued within one year from the date the application begins. (excluding language transcripts)
- If documents are in Korean or English, or the same content is translated in English or Korean along with the original language, no notarization of the translation will be required.
- All the documents must be submitted by mail or direct visit to the OIA. The Documents submitted by email will be considered non-submitted and will be rejected.
- If a student has not met the admissions qualifications or is confirmed to have been admitted through the following illegal or unjustifiable means, admission will be canceled regardless of before or after admission.
  - 1) Fake, tampered with, or submittal of false data
  - 2) Having another person take the Korean language test, dishonestly submitting artwork or claiming achievements on behalf of the applicant
  - 3) Other acts that unfairly affect fair management in selecting students to enter the university
  - 4) If the applicant's actual academic qualifications do not match the submitted materials
- Applicants are responsible for supplying correct contact information on the application documents. Failure to do so may result in the inability of OIA to contact the applicant, which in turn can lead to disqualification.
- Successful applicants who are scheduled to graduate high school, university, community college, or four-year university attending students who have not submitted the original copy of final academic certificates, must submit the original final academic certificates with xuexinwang confirmation, apostille certification, and consul confirmation to the OIA within the tuition deadline. If not submitted, the standard admission certificate will not be issued, and university admission can be canceled.
- Original final academic certificates and transcript with xuexinwang confirmation, apostille certification and consul confirmation must be submitted by the deadline for submitting documents. However, if the document cannot be submitted within the application period, contact the OIA in advance and submit the documents as a notarized translation or a notarized translation copy first, and later submit the relevant documents during the additional submission period according to the OIA's guidance.

Ⓐ : Korean/English Translation notarization required(O) or not(X) Ⓑ : Apostille/Consul's certificate Required(O) or not(X)

No	Required Documents	Ⓐ	Ⓑ	Notes
1	Single copy of the application form			Must be printed out after online application through the website of Office of International Affairs and fee must be paid See Submission of Online Application on page 5 for detailed information
2	Single copy of official authorization for Inquiry into Enrollment and Academic Credit			Automatically printed when printing out the online Application Form
3	High school graduation certificate	o	o	Only for students still attending a 4-year university (Those who graduate from high school in Korea should submit an original copy) Chinese students still attending 4-year university: Submission of online CHSI certificate of high school graduation(regular high school) or consul confirmation (vocational high school, vocational secondary school, technical school) is required
4	Certificate of graduation (or enrollment/expected graduation) at student's home university	o	o	<Applicants from universities in Korea> - Submission of original copy (no translation notarization nor authentication required) <International university students except Korea and China> - Apostille Certification or Consul Confirmation (English or Korean) <Applicants from universities in China> - The original copy of CDGDC or CHSI certificate (English) - Students who are expected to graduate must submit CHSI Student Status Certification Report (English), the original copy of CDGDC or CHSI certificate (English) is must be submitted after graduation.
5	Transcript from student's home university	o	o	Must submit transcripts with the scores of all grades and credits of all semesters for credit transfer. Otherwise, credits will not be transferred. <Applicants from universities in Korea> - Submission of original copy (no translation notarization and authentication required) <International university students except Korea and China> - Apostille Certification or Consul Confirmation (English or Korean) <Applicants from universities in China> - Apostille Certification or the original copy of CDGDC or CHSI certificate (English) pick one of the two
6	Proof of previous university's (relevantmajor) required credits for graduation, criteria for grade evaluation	x	x	For those who apply for transfer admission, proof of meeting previous university (applicant's major) required credits for graduation and criteria for grade evaluation (proof of meeting the requirements for full marks stipulated by the university and proof of the marks converted according to the hundred mark system). English or Korean translation is required, but translation notarization is not required.
7	Copies of passports and ID card (applicants and his/her parents)	o	x	<Applicants who are not Chinese citizens> - Applicants : A copy of passport must be submitted - Parents : A copy of passport / ID card that can identify one's nationality (driver's license not accepted) must be submitted
		x	x	<Chinese applicants> - Applicants : A copy of passport and ID card (driver's license not accepted) must be submitted - Parents : A copy of passport / ID card that can identify one's nationality (driver's license not accepted) must be submitted

Required Documents

Ⓐ : Korean/English Translation notarization required(O) or not(X) Ⓑ : Apostille/Consul's certificate Required(O) or not(X)

No	Required Documents	Ⓐ	Ⓑ	Notes
8	Official document indicating parent-child relationship between the applicant and his/her parents	o	x	<Applicants who are not Chinese citizens> - Original copy of birth certificate or certificate of family relationship <Chinese applicants> - Certificate of family relationship with notarized translation copy of household registry and translated copy of household registry - It is necessary to attach a copy of household registry havings all information updated within 1 year from the date the application started (parents and the student must be included) A Korean or English translation is also required (translation notarization is not necessary) ※ If the applicants family relationship needs to be confirmed (parents' divorce, remarriage, death, missing persons, adoption, etc.), the applicant must submit authenticating documents as evidence. e.g. certificate of divorce, certificate of family relationship, certificate of single parent, child custody, death certificate, adoption certificate, etc.
9	Certificate authenticating bank balance of KRW 20,000,000 equivalent or more	o	x	• Applicants can submit a copy during the document submission period and successful applicants must submit the original before applying for certificate of admission(copy of bankbooks is not allowed) • Other currency that is equivalent to KRW 20,000,000 is possible (e.g. USD 15,500, RMB 111,100, etc.) • Certificate of balance with expiration date must be valid until the date after classes begin - Adults who have completed alien registration and stay in Korea must submit a certificate of balance issued by a Korean bank in their own name - Uzbekistan applicants staying in Uzbekistan can only submit a Uzbekistan KDB bank certificate of balance
10	Certificate of Korean language proficiency (choose one of the two below) - Certificate of TOPIK score(Original TOPIK, TOPIK IBT) - Certificate issued by the Hanyang Institute of International Education ※ Applicants for the English track only need to submit if they have a Korean language certificate.	x	x	Choose one among the Certificate of TOPIK level 4 or higher, or Certificate and transcript of Korean language course level 4 or higher from the Hanyang Institute of International Education. (Department of Architecture applicants must submit TOPIK level 5 or above certificate) - Expiration date: should expire after the starting date of online application - Validity of the HIE Certificate: is within two years from the registration start date
11	Certificate of English language proficiency (TOEFL, IELTS - choose one of the two) ※ Non English track applicants only need to submit if they have an English language certificate	x	x	• Expiration date: Should expire after the starting date of the online application • Applicants for English Tracks must submit it. TOEFLIBT 80 or higher, IELTS 5.5 or higher • Applicants for Korean courses (all courses except those in the English Track) must submit it ※ Applicants who apply for English Tracks from English speaking countries (USA, England, Ireland, Canada, Australia, New Zealand) are exempt from submitting the certificate of English proficiency.
12	Artwork or achievements (only for those who applied for Design, Sports and Arts)	x	x	• If the 1 <sup>st</sup> and 2 <sup>nd</sup> choice of majors are both within the College of Design, the artwork or assignments only need to be submitted once (refer to page 16) • Admitted applicants of the local Chinese screening do not have to submit artwork nor assignment (However, for those who would like to apply for the Hanyang International Scholarship Program, artwork and assignment must be submitted (the same as the other applicants))
13	Proof of nationality renunciation (only for those who were Korean citizens and changed nationality)	x	x	Proof of renunciation of Korean citizenship with authorized date and other information indicated (both applicant and his/her parents) -explanation for nationality renunciation and date must be written
14	Other documents	o	x	Certificates of activities during the entire university period (reward, certificate, practice certificate, etc.) *If there is a semester without grade, submit the reason.

Notice for Documents Submission

1. Submit the documents in order

2. Do not use a stapler nor paper clips

3. Do not submit any photos or recommendation letters

4. All documents should be in A4 size
5. Enter the application number and English name at the bottom right of all documents

6. Those who fail to submit documents within the deadline for submitting documents are excluded from the examination

Admission Inquiries and Document Submission

- **Office : Office of International Affairs (Undergraduate Admission) ERICA**  
Email Inquiries : studyERICA@hanyang.ac.kr(make sure to write down the application number and name in English in the email)  
Phone : + 82-31-400-0791~0795  
Address : Office of International Affairs, 3<sup>rd</sup> floor, Student Welfare Center, Hanyang University ERICA Campus, 55, Hanyangdaehak-ro, Sangnok-gu, Ansan City, GyeongGi Province 15588, South Korea
- **China Regional Office : HYU China Center**  
Phone : +86-21-5169-7003  
Wechat : hyushanghaicenter  
Address : 上海市徐汇区肇嘉浜路1033号徐家汇国际大厦501室  
Website : www.hanyangdaxue.com

## Information on Document Verification

### Undergraduate

### Apostille Certification and Consul Confirmation

Applicants are required to submit the Apostille and Consul Confirmation document (see required documents on pages 10-13 Requirements) during the submission period.

#### ● Apostille Convention

An Apostille is a certificate specifying the modalities through which a document issued in one of the signatory countries can be certified for legal purposes in all the other signatory states.

The applicant can get the Verification of Apostille verification or certificate from a related institution. The document must be submitted along with the original documents of the applicant's academic background. (graduation/degree and transcript)

#### ● Accreditation of the Consular Affairs Bureau

To obtain a Consul Certification, the applicant can visit a Korean diplomatic office in the country where the applicant's school is located or applicant's school's located country's diplomatic office in Korea. That document must be submitted along with the original documents of the applicant's academic background. (graduation/degree and transcript)

#### - Apostille Convention countries (as of 2023)

Area	Members
Asia, Oceania	New Zealand, Niue, Marshall Islands, Mauritius, Mongolia, Vanuatu, Brunei, Samoa, Singapore, Australia, India, Indonesia, Japan, China (include Macao, Hong Kong), Cook Islands, Tajikistan, Tonga, Pakistan, Palau, Fiji, Philippines, South Korea
Europe	Greece, the Netherlands, Norway, Denmark, Germany, Latvia, Russia, Romania, Luxembourg, Lithuania, Liechtenstein, Macedonia, Monaco, Montenegro, Moldova, Malta, Belgium, Belarus, Bosnia and Herzegovina, Bulgaria, San Marino, Serbia, Sweden, Switzerland, Spain, Slovakia, Slovenia, Armenia, Iceland, Ireland, Azerbaijan, Andorra, Albania, Estonia, England, Austria, Uzbekistan, Ukraine, Italy, Georgia, Czech Republic, Kazakhstan, Kosovo, Croatia, Kyrgyzstan, Cyprus, Turkiye, Portugal, France, Finland, Hungary
North America	United States (including Guam, U.S. Virgin Islands, Northern Mariana Islands, Puerto Rico)
Latin America and the Caribbean	Guyana, Guatemala, Granada, Nicaragua, Dominican Republic, Federation of Dominica, Mexico, Barbados, Bahamas, Venezuela, Belize, Bolivia, Brazil, Saint Lucia, Saint Kitts and Nevis, Saint Vincent and the Grenadines, Suriname, Argentina, Antigua and Barbuda, Ecuador, El Salvador, Honduras, Uruguay, Chile, Costa Rica, Colombia, Trinidad and Tobago, Panama, Peru, Paraguay, Jamaica
Africa	Namibia, South Africa, Liberia, Lesotho, Malawi, Botswana, São Tomé and Príncipe, Senegal, Seychelles, Eswatini, Cabo Verde, Burundi, Tunisia
Middle East	Morocco, Bahrain, Saudi Arabia, Oman, Israel

\*Detailed and updated information regarding regional authorities can be found at [www.hcch.net](http://www.hcch.net)

### Academic History Verification Center of the Chinese Ministry of Education (For applicants who graduate from a Chinese High school, University, Community College)

#### ● Information

- Name of the organization : China Academic Degree & Graduate Education Development Center
- Website : [www.chsi.com.cn](http://www.chsi.com.cn)
- Address : 北京市西城区西直门外大街18号金贸大厦C3座 Postal code: 100044
- Email : [kefu@chsi.com.cn](mailto:kefu@chsi.com.cn)
- Phone : +86-10-67410388
- For documentation inquiries, please contact the designated person in each province. (省)
- (Further information : <http://www.chsi.com.cn/xlrz/201202/20120228/284945923.html>)

#### ● Online certificate request and visit application

High school : <https://www.chsi.com.cn/xlrz/index.jsp>

University, Community College : <https://xwrz.chsi.com.cn/gateway>

## Screening Process

※The valuation criteria are not disclosed.

### Screening Process 1 (Document Screening)

College	Engineering Sciences, Computing, Science and Convergence Technology, Languages and Cultures, Communication, Business and Economics (all departments except for Design, Sport and Arts)
Screening Process	Document screening - Comprehensive evaluation of all items on the documents submitted by the applicant according to the internal standards of the university

### Screening Process 2 (Submission of Artwork or Achievements)

College	College of (Design 1 <sup>st</sup> year students): Jewelry and Fashion Design, Integrate Design, Interactive Media Design College of (Design Transfer students): Jewelry and Fashion Design, Industrial Design, Communication Design, Interactive Media Design College of Sports and Arts: Contemporary Music, Dance and Performing Arts, Sport Science
Screening process	1) General process: Document screening + Artwork & Achievements screening 2) China local process: Interview + practical examination (except Sports Science) ※ Regarding onsite admission in China, the detailed schedule will be announced on the website of the Hanyang University China Center. After additional document screening, the final admission results will be announced at the designated date. The schedule for the local Chinese process (College of Design, Sports and Arts) will be announced on the website of the Hanyang University China Center. After the local Chinese screening process, there will be document screening. After the screening process, there will be a notification of admission. Applicants for the local Chinese screening will have their artwork and assignment submission replaced with a local practical examination. (Notification of admission will be posted on the same date with general applicants) ※ For further information about local screening in China check: Hanyang University China Center, <a href="http://www.hanyangdaxue.com">www.hanyangdaxue.com</a> / Phone: +86-21-51697003

### Screening Process 2: More information about Document Screening + Artwork Screening

#### Type 2 : Details of submission of artwork and assignment

\*If applying for 2 majors (eg. 1<sup>st</sup> major is Dance and Performing Arts, 2<sup>nd</sup> major is Contemporary Music) two artworks are required for submission stored in 2 separate USB flash drives.

- Please thoroughly review understand the submission requirements of each department and only submit works that meet these requirements. Refrain from submitting other works and explanations that do not meet the submission requirements.
- If the submitted file does not open, it will be automatically considered a disqualification, so please make sure to check this before submitting.

#### <College of Sports and Arts Freshmen/Transfer>

• **Division of Contemporary Music Freshmen/Transfer (All video and recording files need to be stored in a USB drive, (CDs are not accepted). The name of major must be entered in file name)**

Department	Content
Contemporary Music (Voice)	- Submitted in MP4 file format for 2 songs singing video - Explain the song to be played in Korean for about a minute, and then start playing right away. (Judges will check if the voice is different when the applicant is talking and singing) - Rejection for heavy tone modulation such as auto tuning, pitch tuning, etc. other than simple reverb. (live format) - Rejection for singing while looking at the music score and lyrics - If the video was recorded in a professional recording studio, it will be rejected. live format only - If the sound source is recorded separately and edited with lip syncing in the video, it will be rejected
Contemporary Music (Composition)	- Submit MP3 file sound source and score of 2 or more self-composed songs - A video of the explanation of the song applicant composed is required in Korean (2 minutes)
Contemporary Music (Bass, Guitar, Drum, Piano, Brass (Saxophone, Trumpet, Trombone))	- Submit 2 songs you played as MP4 files - A video of the explanation of the song played in Korean is required (2 minutes)

• **Division of Sports Science Freshmen/Transfer (All video and recording files need to be stored in a USB drive, CDs are not accepted.)**

Department	Content
Sport Coaching	- Submit two 2-minute 40-second or less videos of sports activities (must include applicant's face) - Must be different kinds of sports
Sport Culture	- Video explaining applicant's sports skills, background of sports study and training, and the reason for selecting the relevant event is required in Korean (within 1 minute)



Screening Process

Undergraduate

• Division of Dance and Performing Arts Freshmen/Transfer  
(1<sup>st</sup> Year students (Freshmen))(All video and recording files need to be stored in USB flash drive, CDs are not accepted)

Department	Content	
Dance and Performing Arts	Contemporary Dance (street dance)	- 1 work of modern dance or ballet lasting 2minutes and 30 seconds (Choose 1 music among classical music, creative music, or freestyle music) - Applicants must submit solo works that can identify their faces - Video is required in Korean to explain the introduction and production process of applicant's work, and the reason for selecting the work during the practice process (within 1 minute)
	Creative Dance (Ethnic Dance)	- 1 work of student's own freestyle composition, secondary specialty freestyle (Choose 1 music among Korean traditional dance music, traditional music from the student's home country, or creative music - Student must prepares the music of his/her own specialty and secondary specialty each. The total 2 songs must not exceed 2 minutes and 30 seconds) - Applicants must submit solo works that can identify their faces - Video is required in Korean to explain the introduction and production process of applicant's work, and the reason for selecting the work during the practice process (within 1 minute)

<College of Design Freshmen/Transfer>

Do not mount, use coating or install photo frames on works, otherwise they will be rejected

Department	Content
College of Design (Freshmen,Transfer)	1) Submit a total of 3 original works - 1 pencil drawing, 1 color drawing, 1 free design - Choice the size of each drawing by yourself - Submit it in one PDF file, but the size of the PDF file including the three drawing must be limited to 15MB or less 2) Submit video (submit by saving it on USB flash drive) - Applicants must appear in the video themselves and explan verbally in Korean - Show yourself while explaining your three works at the same time in the video - Time limit of 2 minutes

※ Be sure to indicate the applicant's number and English name on the USB (if it is not marked, it may be omitted from the work review)

※ Admitted applicants of the local Chiese screening do not have to submit artwork nor assignment. However, for those who choose to apply for the Hanyang International Scholarship Program(HISP) when filling out the online application form for admission, artwork must be submitted (same as the other applicants)

Language Proficiency Application Requirements

ERICA Campus Korean Language Proficiency Application Requirements (choose 1 of 3)	1 <sup>st</sup> year students	1. Applicants who have original TOPIK level 3 or higher 2. Applicants who have TOPIK IBT level 3 or higher 3. Applicants who completed the Korean Language Program at Hanyang University IIE, achieving level 3 or higher
	Transfer students	1. Applicants who have original TOPIK level 4 or higher 2. Applicants who have TOPIK IBT level 4 or higher 3. Applicants who completed the Korean Language Program at Hanyang University IIE, achieving level 4 or higher
ERICA Campus English Language Proficiency Application Requirements (choose 1 of 2) <small>*Applicants for English Tracks must submit English Language Certificate</small>	1 <sup>st</sup> year students,	1. TOEFL IBT 80 or higher
	Transfer students	2. IELTS 5.5 or higher

There is no need to submit Korean scores when applying for an English track major. However, an English language proficiency certificate is required. If the applicant's English grades do not meet the admission criteria, the admission will be rejected.

※ The Korean language proficiency application requirements for first year students and transfer students in the Department of Architecture is TOPIK level 5 or higher (or Hanyang University IIE level 5 or higher)

※ Korean Government Scholarship Program (KGSP) students should follow the Korean language requirements enacted by NIIED

ERICA campus IIE : <http://ericaie.hanyang.ac.kr/> (Inquiries: [ericaie@hanyang.ac.kr](mailto:ericaie@hanyang.ac.kr) / +82-31-400-5847, 5842, 5836)

Seoul campus IIE : <https://iie.hanyang.ac.kr>(Inquiries: [iie@hanyang.ac.kr](mailto:iie@hanyang.ac.kr) / +82-2-2220-1663, 1666)

Scholarships for International Students

\*Students are not allowed to receive other on-campus scholarships, excluding student TOPIK scholarships.

For newly admitted students (undergraduate)

● Hanyang International Scholarship Program (HISP)  
Undergraduate HISP grantees are evaluated and selected based on document screening results and/or artwork (portfolio) among undergraduate applicants who are eligible to apply for the HISP.  
• Qualifications : Applicants who are eligible for document screening or submitted their artwork (portfolio)  
• Benefits : 100%, 70%, or 50% reduction in tuition  
• Scholarship period : Full coverage – 1<sup>st</sup> Year Students (Freshman) 8 semesters / Transfer Students(2<sup>nd</sup> year) 6 semesters / Transfer Students(3<sup>rd</sup> year) 4 semesters  
• Requirements : Scholarship recipients must achieve a minimum 2.5 GPA each semester to retain their scholarships  
※ The number of grantees may differ by semester  
• How to apply : Application for the HISP scholarship can be done when submitting the application online

● The Hanyang Scholarship for Excellence in English Language Proficiency  
Issued to freshmen who have excellent grades in English.  
• Benefits:  
TOEFL IBT 89 - 93, IELTS 6.5: 30% reduction of tuition  
TOEFL IBT 94 - 109, IELTS 7 - 7.5: 50% reduction of tuition  
TOEFL IBT 110 - 120, IELTS 8 or above: 100% reduction of tuition  
• Scholarship period: The first semester only  
• Application Period: Only applicable to students who submit their English scores during the submission period, and will be selected at the time of admission. (students do not need to apply directly)  
※ Students whose native language is English cannot apply with TOEFL or IELTS scores

● Hanyang Scholarship for Excellence in TOPIK  
The Undergraduate Hanyang Scholarship for Excellence on the TOPIK is awarded to applicants who have achieved outstanding results on the test. (only documents submitted during the official application period are acceptable)  
• Benefits  
TOPIK level 4 holders : 30% reduction in tuition  
TOPIK level 5 holders : 50% reduction in tuition  
TOPIK level 6 holders : 100% reduction in tuition  
• Scholarship period : The first semester only  
• How to apply : Only students who submit Korean language transcript during the regular Korean language transcript submission period, and only those who apply for admission are eligible. (Students do not need to apply directly)

● The Hanyang Institute of International Education (IIE) Scholarship  
The Undergraduate Hanyang Institute of International Education Scholarship is awarded to applicants who have completed the Korean language program at the Hanyang IIE. (Only documents submitted during the official application period are acceptable)  
• Benefits  
Hanyang IIE level 4 : 30% reduction in tuition  
Hanyang IIE level 5 : 50% reduction in tuition  
Hanyang IIE level 6 : 100% reduction in tuition  
• Scholarship period : The first semester only  
• How to apply : Only students who submit documents during the regular period of submission of documents, and only those who apply for admission are eligible. (Students do not need to apply directly)

Scholarships for International Students

Undergraduate

Mandatory intensive Korean Language Courses for Undergraduate 1<sup>st</sup> Year Students (Freshmen)

For registered students (Undergraduate)

- **The Hanyang International Excellence Awards (HIEA)**

HIEA is awarded to international students who have achieved notable academic progress at Hanyang University. Recipients are selected through documents screening.

  - Qualifications : Students with a valid TOPIK level certificate and insurance who achieve a minimum GPA of 3.0 in the previous semester
  - Benefits : Recipients will receive a 100%, 70%, 50%, or 30% tuition reduction according to their evaluation results
  - Scholarship period : One semester
  - Required documents : To be announced on the OIA website (global.hanyang.ac.kr)
  - Application period: Beginning of the semester (March, September)
- **TOPIK Scholarship**
  - Qualifications
    - International students who are currently enrolled for a degree program at the Hanyang University ERICA Campus
    - Students who achieve higher TOPIK levels than the one submitted to the university at the time of admission, or the grades submitted when applying for the previous TOPIK Scholarship
    - Ineligible: candidates for the last TOPIK. student on a leave of absence, those scheduled to graduate, students who have extended their studies on the undergraduate, visiting/exchange students, language program student,, TOPIK level 6 submitters
  - Benefits
    - Design, Sports and Arts (KRW 700,000): TOPIK no performance / level 2 or lower → level 3 or higher
    - Design, Sports and Arts (KRW 500,000): TOPIK level 3 or higher → level 4 or higher
    - All departments except for Design, Sports and Arts (KRW 700,000): TOPIK no performance / level 3 or lower → level 4 or higher
    - All departments except for Design, Sports and Arts (KRW 500,000): TOPIK level 4 or higher → level 5 or higher
    - Examination fee (KRW 55,000): Eligible for application even if you achieve a lower or the same grade as the previous one, or in case of failure.
    - Scholarship is provided only for students who achieve higher TOPIK levels than the previous level
    - Applicants can receive duplicate benefits with other scholarships
  - How to apply : Apply Online (notice email from OIA)
  - Submission documents : The new TOPIK certificate
  - When to apply : Right after the announcement of each TOPIK test result

※ Scholarship regulations may change anytime, please refer to the OIA’s official website for latest information

Who must take the classes?

- 1<sup>st</sup> year students (freshmen) entering the degree program, if both parents are foreign nationals (excluding transfer students and English language track students).
- ※ Students who acquire a TOPIK level 5 or higher, or Hanyang IIE level 5 or higher at the Hanyang University Institute of International Education are exempt from having to enroll in the mandatory intensive Korean language program. (only for students who submit documents during the designated period of submission of Korean language certificates)

Course Introduction

- This course is specially designed to help international students improve their Korean language skills and adjust to university life.
- 16 credits of intensive Korean language courses will be offered (8 classes) during the first two semesters after admissions.
- Composed of four courses (8 credits) in the first semester and four courses (8 credits) in the second semester.
- Accredited credits are considered as graduation credits. (elective course category)
- Courses in the intensive Korean language program are required for graduation, and if any classes are failed, they must be retaken in order to graduate.
- Every semester all remaining credits (12 credits) except for the mandatory 8 credits can be selected from available major courses and/or elective courses.

Graduation Requirements

- Regardless of the admission period (spring or fall semester), 1<sup>st</sup> year students (freshmen) need to complete 8 semesters while transfer students need to complete 4 semesters(third year transfer)/6 semesters(second year transfer) to graduate. (The exception is for those who register and meet the early graduation requirements)
- Students in the Design, Sports and Arts College must achieve TOPIK level 3 or higher, while students in other colleges must achieve TOPIK level 4 or higher and submit the certificate in order to graduate. (excluding those students who have enrolled in English track programs)
- Students who have already submitted a TOPIK Level 4 or higher certificate upon admission may resubmit the certificate at the time of admission.

※Each department (major) has different graduation requirements, so please check the appropriate department office for the exact graduation requirements.

KRW(₩) / per semester	
Fields	Tuition
Humanities/ Social Sciences (Language and Cultures, Communication, Business and Economics)	4,789,000 (USD 3,645/CNY 26,095)
Natural Science/ Physical Education (Science and Convergence, Sports and Arts - Sport Science)	5,579,000 (USD 4,246/CNY 30,400)
Engineering (Engineering Sciences, Computing)	6,313,000 (USD 4,805/CNY 34,400)
Fine Arts (Design, Sports and Arts - Dance and Performing Arts)	6,328,000 (USD 4,816/CNY34,481)
Music (Sports and Arts - Contemporary Music)	7,093,000 (USD 5,399/CNY 38,650)

※Figures are based on the 2024 exchange rate, and thus the exact fee amounts are subject to change

Notice related to Registration

- Admission may be canceled if the documents submitted for admission are missing major details or if information is false or fraudulent. If the admission is canceled, the tuition fee paid will not be refunded. However, if the semester in which the tuition fee has been paid has not ended, the tuition fee of the semester will be refunded in accordance with Hanyang University policy.
- Applicants whose admission has been canceled due to the above reasons at Hanyang or other universities will not be allowed to reenter for a certain period of time.
- Those who gain admission to more than two universities must enroll in only one university. If an applicant infringes on this rule, all acceptances and/or admissions from the universities may be cancelled. (Hanyang University Seoul Campus and Hanyang University ERICA Campus are considered separate universities)
- Applicants who gain admission to Hanyang must pay the tuition fee during the registration period. Failure to do so will be interpreted as the student’s intention to forgo the admission.
- In the case of wire transfers (T/T) from overseas, the payment amount should include all international transaction fees. when funds are transferred overseas, the bank will charge their own overseas transfer fee. This amount is in addition to the school registration fee. Therefore, please note that there may be additional transaction fees of KRW20,000 to KRW30,000 when transferring funds. However, students will be reimbursed these extra fees by Hanyang ERICA. Please note that the T/T amount is insufficient, the transfer will be rejected or other errors may occur.
- Applicants may not be able to gain admission if they do not follow the admission procedures of the university or do not submit all the required documents.

Tuition Fee Chart

Tuition Fee Chart (This information is for 2024 and tuition fees are subject to change according to university policy.)

Notice related to Registration



## Notice related to Registration

### Forgoing Admission after Registration

- For those who wish to forgo admissions after tuition fee payment has been made, the Waiver of Admission (Hanyang University Form) must be submitted to the OIA within the designated period. In case admission is forgone after the semester begins, the tuition fee will be refunded according to the terms and conditions related to the tuition fee of enrolled students.

### Insurance

- All new students must apply for the National Health Insurance Service of Korea in accordance with the laws of the Republic of Korea. (National Health Insurance Act: Foreigners who stay inside of Korea for more than 6 months must apply for the National Health Insurance Service as a Locally Insured Person, and those who are in default on the National Health Insurance fee are restricted from getting a residential permit such as visa extension)
- In order to protect all students' other insurance coverage that is not covered by the National Health Insurance Service of Korea, it is necessary to enroll in International Student Injury Insurance. The insurance fee needs to be paid together with the tuition fee. (Insurance will be included in the tuition bill. You cannot enroll without paying the insurance)
- Detailed information related to insurance subscription will be provided after admission acceptance.

### Inquiries

National Health Insurance Service: 1577-1000  
DB Insurance: 02-776-8500(KR,EN), 02-3481-2133(CN)

## Undergraduate

## Dormitory Accommodations

### Dorms on the ERICA Campus

※See page 42 for facility photos

KRW(₩) / per semester

Type	Name of Dorm	Room Type	Fee (6 months)
On-campus	Injae Hall	Room for 1 person (private bathroom)	2,578,000 (USD2,023/CNY14,015)
		Room for 2 people (shared bathroom)	1,290,000(USD1,012/CNY7,013)
	Changeui Hall	Room for 1 person (private bathroom)	2,745,000(USD2,154/CNY14,923)
		Room for 2 people (private bathroom)	1,805,000(USD1,416/CNY9,812)

※Figures are based on the 2024 exchange rate, and thus the exact amount of fees are subject to change

### Dormitory Administration Team contact info

Office : ERICA Residence Hall  
Website : <http://hydorm.hanyang.ac.kr/>  
Phone : +82-31-400-4375,4378,4379  
Address : Hanyang University ERICA Campus Residence Hall, 55 Hanyangdaehak-ro, Sangnok-gu, Ansan City,  
GyeongGi Province 15588 South Korea

※ This guideline is written in Korean and translated in other languages. Thus, the Korean guideline takes precedent over the translated versions in case of any conflicting information of its interpretation arises. Matters not specified in this guidelines shall be subject to the decision of the Admissions Committee.

## Hanyang University ERICA English Track Programs

English track programs have been established in the **Department of Economics** and **Department of Business Administration** at the ERICA Campus. In the English tracks, all courses are taught in English, and English language proficiency is required for applicants (not Korean language proficiency).

### Advantages of the ERICA English Track Programs



Extensively implemented and chosen **IC-PBL (industry-coupled problem-based learning)** as learning method. This teaching practice has been getting attention from many universities in the country as the methodology is strongly welcomed by industries.



#### Global Experiences

Scholarships are offered in the specialized **dual-degree programs** with the University of Wisconsin-River Falls and **exchange programs** with over 300 partner universities.



#### Mentoring

ERICA offers special mentoring programs aimed at providing students with necessary assistance for both their academic studies and Korean language studies. There are also, cultural activities to help students better understand Korean culture.



The Division of Business Administration obtained AACSB accreditation in 2018. **AACSB recognized** Hanyang ERICA's excellent education and research performance as less than five percent of total business schools in the world have received the AACSB accreditation.



#### Career Development

ERICA boasts a high job placement record in terms of both quality and quantity. Our graduates are able to gain employment at top ranked organizations including government agencies, public/private companies, financial institutions, academia, research institutes, start-ups, and so on.

## Business Administration Curriculum

Year	Course Title
1 <sup>st</sup> year	Introductory Statistics for Business, Principles of Business Administration, Principles of Economics 1, Introduction to Accounting, Principles of Economics 2
2 <sup>nd</sup> year	Advanced Statistics for Business, Global Business Communication, Quantitative Business Analysis, Marketing Management, Financial Management, Business Ethics and Corporate Social Responsibility, Intermediate Accounting 1, Microeconomics 1, Corporation Law, Operations Management, Organization Behavior, Consumer Behavior, Theory of Investment
3 <sup>rd</sup> year	Marketing Research, Managerial Accounting1, Strategic Human Resources Management, Management Information Systems, Strategic Management, E-Business, Managerial Accounting2, Technology Management, Financial Economics
4 <sup>th</sup> year	Financial Economics 2, Logistics Management, Economic Theory of Regions, Financial Institutions and Markets, Economic Theory of Global Regions, Economic Development

\* Courses offered in English are subject to change.

## Economics Curriculum

Year	Course Title
1 <sup>st</sup> year	Principles of Economics 1, Principles of Business Administration, Principles of Economics 2, Mathematics for Economics
2 <sup>nd</sup> year	Introduction to Statistics, Microeconomics 1, Macroeconomics 1, Introduction to Accounting, Global Business Communication, Financial Management, Microeconomics 2, Macroeconomics 2, International Economics, Labor Economics
3 <sup>rd</sup> year	Urban Economics, Mathematical Economics, Monetary Economics, Industrial Organization, Introduction to International Finance, Labor Market Policy, Game Theory Financial Economics, Theory of Investment, Technology Management
4 <sup>th</sup> year	Financial Economics 2, Economic Theory of Regions, Strategic Management, Economic Development, Economic Theory of Global Regions, Statistics Programming and Data Analysis

\* Courses offered in English are subject to change.

## Eligibility Requirements for Admission

Type	Eligibility Requirements
1 <sup>st</sup> Year Students (freshmen)	1. Nationality: International students with foreign citizenship whose parents both have foreign citizenship - Students and their parents should have acquired foreign citizenship before the students entered high school - If the students and their parents have dual citizenship, they should all have relinquished their Korean citizenship before the student entered high school 2. Academic background: Those who have graduated or are expected to graduate from high school 3. Applicants for this English track major must submit TOEFL IBT 80 and higher, or IELTS 5.5 and higher. (Certificates of English language should expire after the starting date of online application.) Applicants from English speaking countries are exempt from submitting certificates of English language.
Transfer	1. Nationality: International students with foreign nationality whose parents both have foreign nationality - If the student or his/her parents have dual citizenship that includes Korean nationality, the application will not accepted. - Those who have acquired foreign nationality or renounced Korean nationality (lost Korean citizenship): Students and their parents must have acquired foreign nationality or no longer possess Korean nationality for more than 3 years before the application start date. 2. Academic background: To transfer in the 3 <sup>rd</sup> year, students are expected to complete or have completed at least 2 years (4 regular semesters, excluding summer and winter sessions) at a four-year university at home and/or abroad and have earned all the credits equivalent to 2 or more years of courses. To transfer in the 2 <sup>nd</sup> year, students who are expected to complete or have completed at least 1 years (2 regular semesters, excluding summer and winter sessions) at a four-year university at home and/or abroad and have earned all the credits equivalent to 1 or more years of courses. 3. Applicants for this English track major must submit TOEFL IBT 80 and higher, or IELTS 5.5 and higher. (Certificates of English language should expire after the starting date of online application.) Applicants from English speaking countries are exempt from submitting certificates of English language

## More information

Admission Procedure – Page 4

Admission Schedule – Page 7

Scholarships – Page 17-18

Dormitories – Page 20



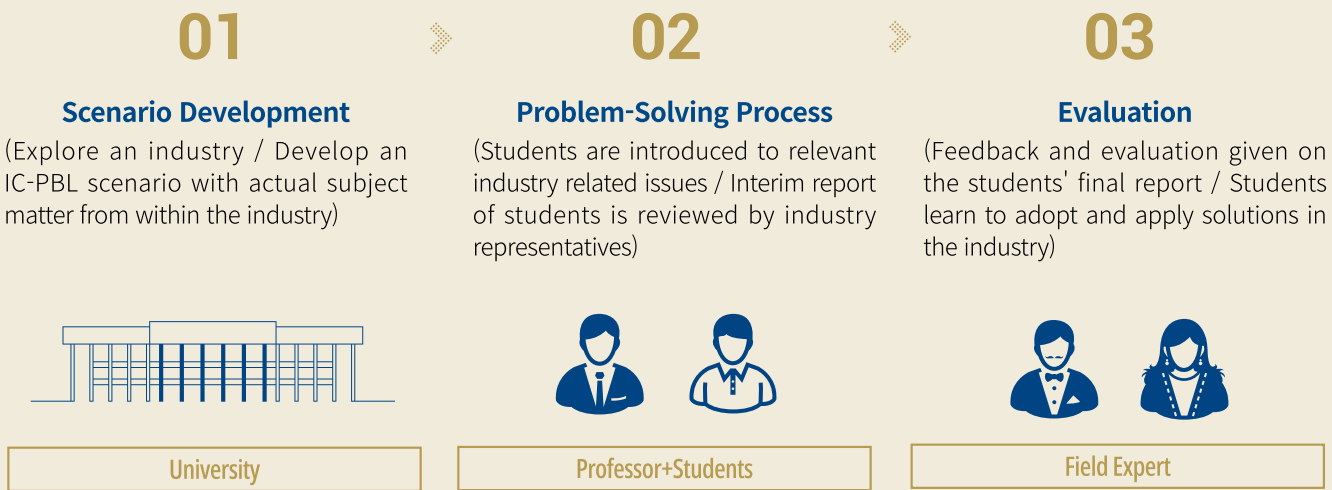
ERICA IC-PBL  
HANYANG UNIVERSITY

## Innovative Education Model : ERICA IC-PBL

### What is IC-PBL? (Industry-Coupled Problem-Based Learning)

IC-PBL is a learner-centered educational model at ERICA in which learners solve context-rich problems that occur in real-life fields, coupled with industry, society, and university. Students learn debating skills, creativity, and problem solving skills by focusing on specific subject matter.

### Process of IC-PBL

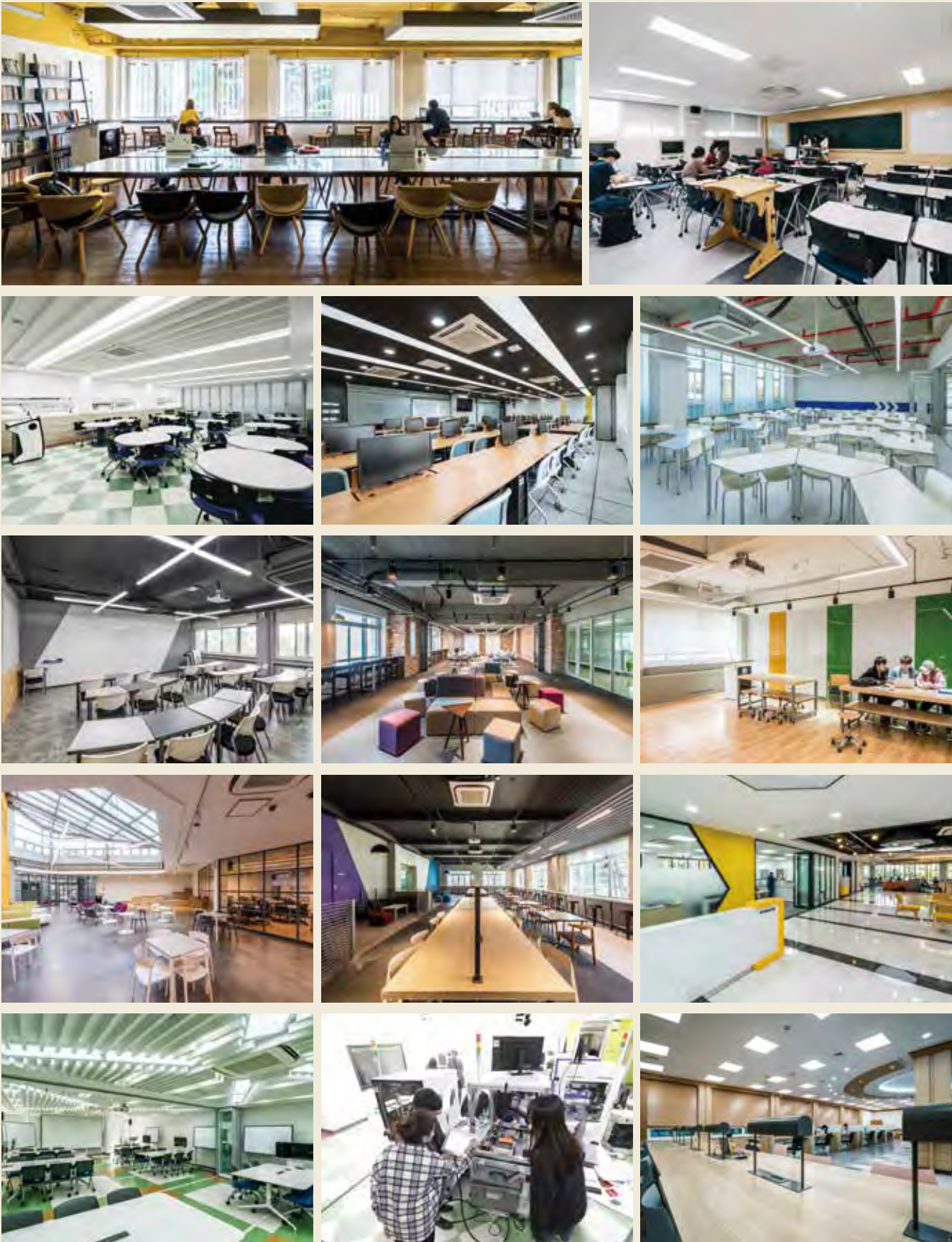


### Industry-Academic Cooperation Cases of IC-PBL

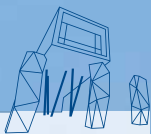


- icpbl-eng.hanyang.ac.kr (English)
- icpbl.hanyang.ac.kr (Korean)
- icpbl-chn.hanyang.ac.kr (Chinese)





# Graduate School



## CONTENTS

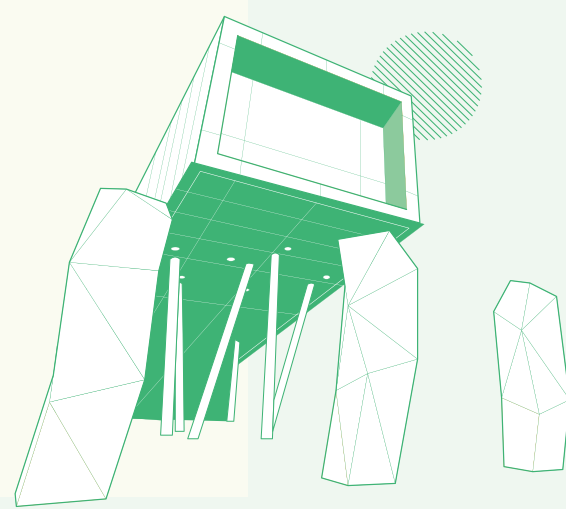
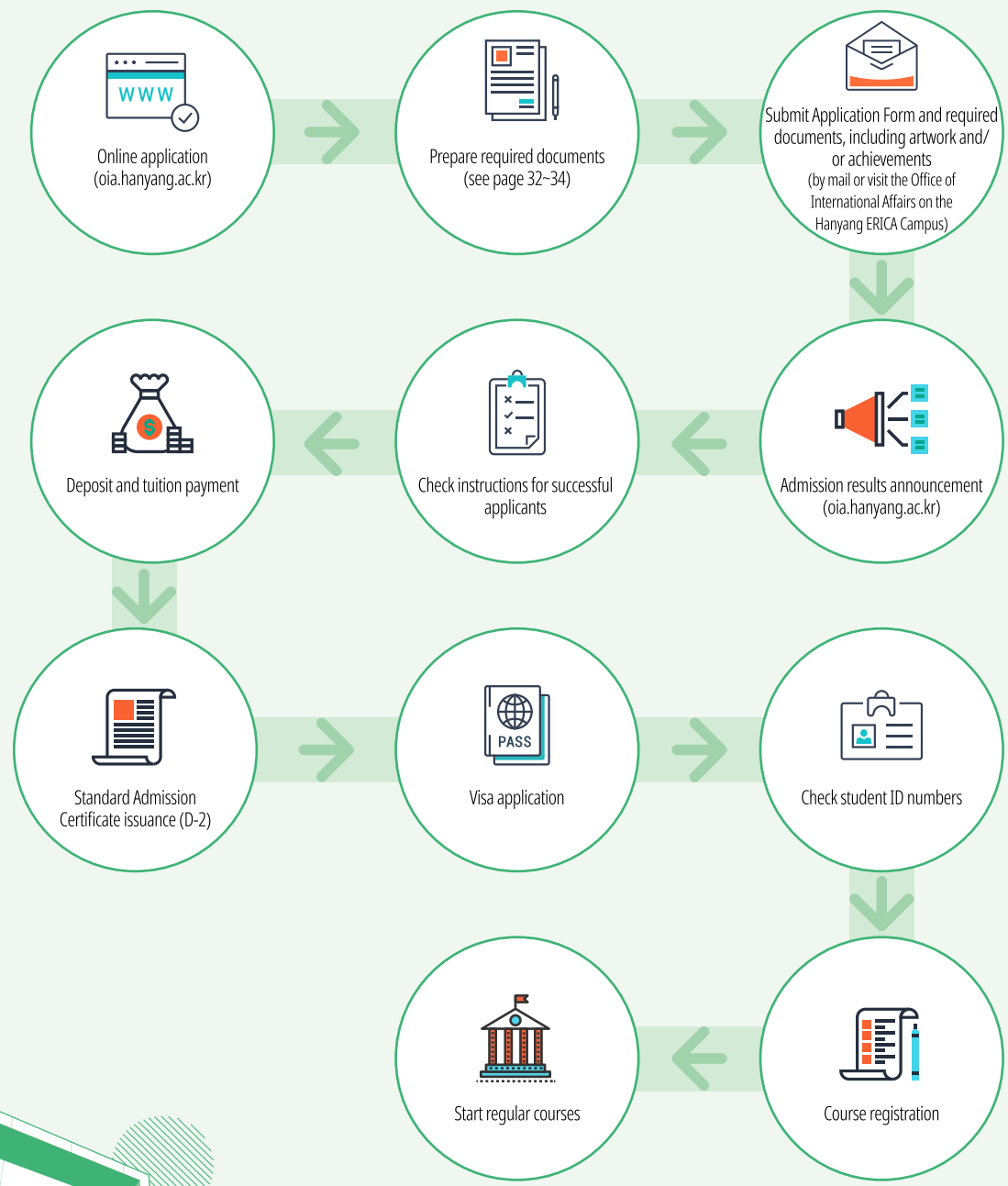
● Application Procedure	26
● 2024 Fall Semester Notice	27
1. Admission Unit	28
2. Application Schedule	30
3. Eligibility	31
4. Admission Inquiries	31
5. Required Documents	32
6. Additional Documents and NOTES	35
7. Evaluation Process and Korean Language Requirements	36
8. Scholarships for International Students	37
9. Graduation Requirements	38
10. Tuition Fee	39
11. Information on Document Verification	40
12. Dormitories	42





Application Procedure

Graduate School



2024 Fall Semester Notice

1. Multiple Applications Not Allowed

- All graduate programs at Hanyang University must be applied through the International Admissions Team in Seoul Campus.
- An applicant can apply for a single admission unit only, regardless of the campus.

2. Document Submission Cautions

■ Korean Universities

- Only the documents with verification marks like below are regarded as **AUTHENTIC(ORIGINAL)**.

Examples (Complete Verification Marks)			

- Documents with incomplete or compromised marks like below are regarded as **PHOTOCOPIES, therefore not accepted**.

Examples (Incomplete printing, photocopy of a document, etc.)			

Examples (Printed from a PDF source)	

■ Chinese Universities

- Degree Certificate : 《中国高等教育学位在线验证报告》 Printout
- Academic Certificate or Certificate of Expected Graduation from a Transferred University : 《教育部学籍在线验证报告》 Printout
- Please refer to <https://www.chsi.com.cn/xlcx/bgys.jsp> for the forms.

3. Accepted Korean Proficiency Certifications Expanded

As-Is	To-Be(from Spring Semester of 2024)
1. TOPIK Level 4 or above	1. TOPIK Level 4 or above
2. Hanyang IIE Level 4 or above	2. Hanyang IIE Transcript of Level 4 or above
	3. TOPIK iBT Level 4 or above

※ Trial Test Scores are not accepted.

4. Bank Balance Certificate Submission

- Bank Balance Certificates will only be requested to admitted(successful) applicants, for those who need to apply for the Korean Visa.
- More information on Bank Balance Certificates will be informed later through the guideline for admitted applicants.



Admission Unit  
(General · Specialized Graduate School)

Graduate School

Names of departments/majors are subject to change before the beginning of the semester, make sure to check your preferred Admission Unit when making an online application.  
Check ‘06. Additional Documents and NOTES(Specific Majors)’ for departments/majors **with a \* mark**.

General Graduate Program - Engineering · Natural Science · Pharmacy Field

College/Division	Department	Major	Field in Tuition Fee Chart	Program		
				MA/MS	Ph.D	MA - Ph.D
Engineering Science	Transportation Engineering	-	Engineering	○	○	○
	Architectural Design*	-		○	○	○
	Architectural System Engineering	-		○	○	○
	Computer Science and Engineering	-		○	○	○
	Mechatronics Engineering	-		○	○	○
	Bionanotechnology	Bioengineering		○	○	○
		Nanotechnology		○	○	○
		Bionanotechnology		○	○	○
	Civil & Environmental System Engineering	-		○	○	○
	Electronic Engineering	-		○	○	○
	Materials Science and Chemical Engineering	-		○	○	○
	Industrial Management Engineering	-		○	○	○
	Mechanical Design Engineering	-		○	○	○
Computing	Human- Computer Interaction*	-	Engineering	○	○	○
	Applied Artificial Intelligence	-		○	○	○
Science and Convergence Technology	Applied Physics	-	Natural Science	○	○	○
	Applied Mathematics	-		○	○	○
	Molecular & Life Science	-		○	○	○
	Applied Chemistry	-		○	○	○
	Marine Sciences and Convergent Technology	-		○	○	○
	Photonics and Nanoelectronics	-		○	○	○
Pharmacy	Pharmacy	-	Pharmacy	○	○	○

General Graduate Program – Humanities · Social Science Field

College/Division	Department	Major	Field in Tuition Fee Chart	Program		
				MA/MS	Ph.D	MA - Ph.D
Business and Economics	Strategic Management	Marketing	Humanities/ Social Science	○	○	○
		Human Resource Management		○	○	○
		Strategy		○	○	○
		Service and Operation Management		○	○	○
	Management Consulting	Management Consulting		○	○	○
	Applied Economics	-		○	X	○
	Insurance & Finance	Insurance & Finance		○	○	○
		Banking & Finance		○	○	X
		Accounting		○	○	X
Languages and Cultures	Cultural Anthropology	-	Humanities/ Social Science	○	○	X
	Japanese Language and Culture	-		○	○	○
	Chinese Commerce & Area Studies	-		○	○	○
Communication & Social Science	Advertising & Public Relations*	-	Humanities/ Social Science	○	○	○
	Media Informatics*	-		○	○	○

Admission Unit  
(ERICA Campus: General · Specialized Graduate School)

General Graduate Program – Fine Arts · Music · Physical Education Field

College/Division	Department	Major	Field in Tuition Fee Chart	Program		
				MA/MS	Ph.D	MA - Ph.D
Design	Design*	Jewelry & Fashion Design	Fine Arts	○	○	○
		Industrial Design		○	○	○
		Graphic Design		○	○	○
		Interactive & Multimedia Design		○	○	○
Sports and Arts	Sport Science	-	Physical Education	○	○	X
	Performing Arts	-	Fine Arts	○	○	X
	Applied Music*	Composition/Vocal/Instrumental	Music	○	X	X

Interdisciplinary Graduate Program

College/Division	Department	Major	Field in Tuition Fee Chart	Program		
				MA/MS	Ph.D	MA - Ph.D
Engineering Science	Smart City Engineering	-	Engineering	○	○	○
	Interdisciplinary Robot Engineering System	-		○	○	○
Languages and Cultures	Culture Contents	-	Humanities/ Social Science	○	○	X
	Genre Technology and Subculture	-		○	○	○

※ Course Catalog for General Graduate Program : <http://www.grad.hanyang.ac.kr/eng/ebook/index.html>

※ Department & Majors Website : <http://www.grad.hanyang.ac.kr/eng/department/departmentintro.php>

Specialized Graduate Program

College/Division	Department	Major	Field in Tuition Fee Chart	Program		
				MA/MS	Ph.D	MA - Ph.D
Industrial Convergence	(NIGHT)Business Administration	-	Industrial Convergence- Humanities/ Social Sciences	○	X	X
	Jazz Performance*	-		○	X	X
	(NIGHT)Applied Dance*	-		○	X	X
	(NIGHT)Culture Contents	-		○	X	X
	(NIGHT)Convergence Design*	-	Industrial Convergence- Natural Science	○	X	X

※ Information for Industrial Convergence : <https://gsic.hanyang.ac.kr>



Application Schedule

Graduate School

Admission Process	Schedule		Note
	2024 Fall Semester (September)	2025 Spring Semester (March)	
Guideline Announcement	February 1, 2024	August 1, 2024	Download from the OIA website (http://oia.hanyang.ac.kr)
Online Application	March 4 (10:00) ~ April 5 (17:00), 2024	September 2 (10:00) ~ October 11 (17:00), 2024	Check the notice before the online application (http://oia.hanyang.ac.kr) - Refer to <05. Required Documents> - Submit by post or visit to below address  [Address] International Admissions Team, Office of International Affairs, Room 218, International Building, Hanyang University, 222 Wangsimni-ro, Seongdong-gu, Seoul (04763), Republic of Korea
Documents Submission	March 4 (10:00) ~ April 12 (17:00), 2024	September 2 (10:00) ~ October 14 (17:00), 2024	
Result Announcement	June 14, 2024	December 18, 2024	Available only on OIA website (http://oia.hanyang.ac.kr → Admissions → Regular Admission Result)
Tuition Payment	June 2024 (tentative)	January 2025 (tentative)	- Refer to the ‘Guidelines for newly accepted candidates’ after the result announcement - Must make the payment to an individually assigned virtual account
Freshmen Orientation	August 29, 2024 (tentative)	February 28, 2025 (tentative)	Time and venue will be announced later
Semester Begins	September 2, 2024	March 4, 2025	

- ※ The dates are subject to change and all admission notifications will be posted on the OIA website.  
(http://oia.hanyang.ac.kr → Admissions → Notice).
- ※ All dates and times are based on Korea Standard Time (KST).
- ※ Applicants must submit all required documents by the deadline. Those who do not may be disadvantaged.
- ※ Applicants are not allowed to modify their application after final submission, so please make sure to fill out the application form correctly before submitting it. Hanyang University is not responsible for any consequences from missing or false information written in the application.  
- Be careful not to make any mistakes when you enter your name (both in Korean and English), date of birth (YY/MM/DD), passport number, ARC number, type of Visa, contact number, address, and e-mail address.

Eligibility

Application Type	Eligibility
[A] Applicants with foreign nationality, whose parents both have foreign nationality	<b>1. Nationality</b> : Foreign national with foreign national parents - Both the applicant and their parents must acquire foreign nationality(citizenship) <u>before the start date of the Online Application period.</u> - For dual citizenship holders, they must renounce Korean citizenship <u>before the start date of the Online Application period.</u> <b>2. Education</b> - Bachelor’s degree holder for Master’s applicants - Master’s and Bachelor’s degree holder for Doctoral applicants ※ Provisional Certificates NOT accepted <div><b>&lt;Caution&gt;</b> - Applicants who are in a status of ‘expected graduation’ must be able to submit their official Degree Certificate before the start of the semester. - Applicants expected to graduate may be granted admission, however failing to submit the related documents within time may lead to cancellation of the admission.</div>
[B] Applicants(including Koreans) who have completed their entire education outside Korea	<b>1. Nationality</b> : Koreans or foreigners who have completed their entire education outside Korea including elementary/middle/ high school, bachelor’s(and master’s), or equivalent to these educational levels <b>2. Education</b> - Bachelor’s degree holder for Master’s applicants - Master’s and Bachelor’s degree holder for Doctoral applicants ※ Provisional Certificates NOT accepted <div><b>&lt;Caution&gt;</b> - Applicants who are in a status of ‘expected graduation’ must be able to submit their official Degree Certificate before the start of the semester. - Applicants expected to graduate may be granted admission, however failing to submit the related documents within time may lead to cancellation of the admission.</div>

- **Cautions regarding eligibility**
  - ※ The applicant must fulfil one of the eligibilities above. If the applicant is eligible for both Application Types, the applicant will be regarded as Application Type A.
  - ※ If the applicant submits fake, forged, or manipulated documents related to eligibility, the admission will be revoked even after acceptance.
  - ※ If, during the Evaluation Process, the applicant has to submit additional documents, the Office of International Affairs may request them individually. Applicants are fully responsible for any consequences resulting from failure to respond to the OIA in time due to incorrect contact information or being unreachable.
  - ※ Failing to provide degree certificates will result in the revocation of admission.

- [Cautions for nationality(citizenship)]**
- If the applicant or one of his/her parents is holding a dual citizenship including Korea, the applicant is not considered as a foreigner. If the applicant or one of his/her parents is revealed to holding a dual citizenship including Korea, admission will be revoked even after acceptance.
  - If there are special cases related to family relations or citizenship(divorce, remarriage, single parent, death, missing, etc.), the applicant must submit a proof document related to these cases.  
Examples : Certificate of Divorce, Certificate of Family Relationship, Certificate of Single Parent, Certificate of Death, proof of a missing person, etc.
    - ※ If the applicant’s single parent, who has legal custody of the applicant and is a foreign national, remarries to a Korean national, the applicant must submit the Korean spouse’s family relationship certificate.
    - ※ (For Chinese) Death certificates can be replaced by one of the below documents
      - ① Original Notarized Cancellation of Registration Certificate
      - ② Original Notarized Family Certificate verifying “death”
  - Any changes in family relations(divorce, adoption, etc.) after the start date of the Online Application period is NOT accepted.

Admission Inquiries

Office	Email	Website	Phone	Fax
International Admissions Team	admingrad@hanyang.ac.kr	oia.hanyang.ac.kr	82-2-2220-2445-2448	82-2-2220-1798
	Office of International Affairs, Room 218, International Building, Hanyang University 222 Wangsimni-ro, Seongdong-gu, Seoul (04763), Republic of Korea			



Required Documents

Graduate School

● Instructions for Document Submission

- ❶ All required documents must be prepared and submitted before the submission deadline.
- ※ Applicants shall be responsible for any disadvantages caused by not presenting the proper apostilled or consular confirmed original documents within the requirements submission period. However, in cases of unavoidable circumstances where submission is difficult, supplementary submission must be made according to our instructions provided.
- ❷ All documents must be submitted to the OJA either by post or in person.
- ❸ Every document should be in A4 format and submitted in the order specified in the document submission list.
- ❹ Documents that are not written in Korean or English must be accompanied by notarized translations into either language.
- ❺ To legalize academic degree certificates, please request certificate to relevant organization. (refer to Appendix 2)
- ❻ If the contents of the documents differ following the academic background check, admission may be revoked even after enrollment.
- ❼ It is the applicant's responsibility to ensure that all required application materials are submitted.
- ❽ Other supporting documents (such as a certificate of achievement or a license) must be notarized in Korean (or English).
- ❾ ALL submitted documents including supporting materials will NOT be returned to the applicants. We advise applicants to prepare additional documentation for visa applications.
- ❿ The valid date for the notarized documents are 12 months (issued after September 1<sup>st</sup>, 2022 only valid). There's no expiration date for a consular confirmed or apostille documentation.

List of Required Documents

No.	Required Documents	MA/ MS	Ph.D	Com- bined (MA- Ph.D)	Details															
1	Copy of the Application Form	○	○	○	Apply and pay the application fee online. The application form must be printed. (credit card/account transfer/Alipay: 142,000 KRW) ※ Transaction fees may apply with payments through Alipay.															
2	Applicant Declaration	○	○	○	Automatically printed when printing out the online application form															
3	Personal Statement and Study Plan	○	○	○	Must be written online and printed out. ※ English or Korean															
4	Bachelor’s Degree Certificate or Official Certificate of Expected Graduation	○	○	○	<div>[Proof Document Submission Standards]</div> <table><tr><th colspan="2">Certificate</th><th>Korean Universities</th><th>Chinese Universities</th><th>Other Universities</th></tr><tr><td rowspan="2">Degree</td><td>Degree Certificate</td><td rowspan="3">Original</td><td>CHSI Degree Certificate (English)</td><td rowspan="3">Original Apostille or Consular Authentication</td></tr><tr><td>Certificate of Expected Graduation/Enrollment</td><td>CHSI Academic Certificate (English)</td></tr><tr><td>Grades</td><td>Official Transcript</td><td>(Choose one) Original Consular Authentication, CHSI Full Academic Report</td></tr></table>	Certificate		Korean Universities	Chinese Universities	Other Universities	Degree	Degree Certificate	Original	CHSI Degree Certificate (English)	Original Apostille or Consular Authentication	Certificate of Expected Graduation/Enrollment	CHSI Academic Certificate (English)	Grades	Official Transcript	(Choose one) Original Consular Authentication, CHSI Full Academic Report
Certificate		Korean Universities	Chinese Universities	Other Universities																
Degree	Degree Certificate	Original	CHSI Degree Certificate (English)	Original Apostille or Consular Authentication																
	Certificate of Expected Graduation/Enrollment		CHSI Academic Certificate (English)																	
Grades	Official Transcript		(Choose one) Original Consular Authentication, CHSI Full Academic Report																	
5	Official Transcript of Bachelor's Degree (All semester) ※ Expected graduates require to submit full transcripts except for the last semester.	○	○	○																
6	Master’s Degree Certificate or Official Certificate of Expected Graduation	X	○	X	※ If an admitted(successful) applicant is expected to graduate, the applicant must submit the Degree Certificate before the start of the semester (Transcripts do not need to be submitted again) ※ Applicants who transferred their university or has done a dual degree program, refer to the notice on the next page. ※ All official documents requiring Apostille and Consular Authentication must be notarized in the country where the applicants’ final university is located.															
7	Official Transcript Master's Degree (All semester) ※ Expected graduates require to submit full transcripts except for the last semester.	X	○	X	※ If any of the original document is issued only once from the related institution: photocopy the apostilled or consular confirmed document, receive a <u>true copy attestation</u> to the photocopy, and submit that <u>attested copy</u> . ※ For doctoral program applicants, bachelor's degree related documents may be submitted in photocopy forms.															

O = Mandatory, △ = Optional, X = No need to submit

Required Documents

No.	Required Documents	MA/ MS	Ph.D	Com- bined (MA- Ph.D)	Details									
8	(Optional) Certificate of GPA converted into 100 scale or percentage ※ If GPA with full marks are clearly stated in your transcript, this document is not necessary.	△	△	△	Submit one of the following documents: 1) An official document issued by the applicant's alma mater describing a grade point average (GPA) converted into 100 scale or percentage (English or Korean) 2) US WES ICAP (Course-by-Course Evaluation) certificate - WES basic or iGPA calculator is not acceptable 3) If full GPA has been caculated from Scholaro.com or wes.org etc., only valid once this document is attested by the graduated university(with school official stamp on). Apostille or notarization is not necessary. ※ If the transcript does not state your full marks and this document is not submitted, you will be exempted from HISP scholarship evaluation.									
9	Proof of Nationality (Applicant's and Parents')	○	○	○	<table><tr><th></th><th>Chinese</th><th>Other Foreign Nationals</th></tr><tr><td>Applicant</td><td>Copies of National ID and Passport</td><td>Copy of Passport</td></tr><tr><td>Both Parents</td><td>Copy of National ID</td><td>Copy of Passport or National ID</td></tr></table> ※ Passports and ID cards must be valid. ※ For other foreign nationals except the Chinese, if their submitting ID cards are in other than Korean or English must be accompanied by original notarized translation. ※ Non-passport holders can submit ID cards(except the driving license) that can prove nationality instead. ※ For applicants from Pakistan, a printed document of valid Nadra Family Registration Certificate (FRC) can be submitted in lieu of 1) Family Relation Certificate 2) Both Parents' Personal ID Cards, but the copy of applicant's passport must be accompanied with this document.		Chinese	Other Foreign Nationals	Applicant	Copies of National ID and Passport	Copy of Passport	Both Parents	Copy of National ID	Copy of Passport or National ID
	Chinese	Other Foreign Nationals												
Applicant	Copies of National ID and Passport	Copy of Passport												
Both Parents	Copy of National ID	Copy of Passport or National ID												
10	Original Official Document proving the family relations between the applicant and his/her parents (Notarized Document : issued after September 1 <sup>st</sup> , 2022)	○	○	○	Submit one of the following : - Original Birth Certificate that both parents' names are stated - Original Family Relation Certificate (If the above documents are in other than Korean or English must be submitted with original notarized translation)  [Reference] <b>Mongolia</b> : Kin relation verification, <b>Nepal</b> : Jeonmadalda, <b>Philippines</b> : Family Census, <b>Indonesia</b> : Family relation verification (KARTU KELUARGA), <b>Bangladeshi</b> : Jeommeo Kakus or Jeommeo Sidetiket, <b>Vietnam</b> : Giay Khai ainh, <b>Pakistan</b> : Nadra Family Registration Certificate(FRC), <b>Sri Lanka</b> : Pauler certificate, Myanmar : Yingtausayayen, <b>Kyrgyzstan</b> · <b>Kazakhstan</b> · <b>Uzbekistan</b> · <b>Ukraine</b> · <b>Thailand</b> : Birth certificate, <b>Italy</b> : Estratto Attodi Nascita  ※ If the family relation certificate does not verify relationship between applicants and both parents because of their divorce or death, an additional certificate of divorce or death must be submitted with notarized translation in Korean or English.									
11	Proof of Korean Language Proficiency		Optional		TOPIK test score (including iBT or Speaking) HYU JIE's certificate of completion, Exemption Letter ※ TOPIK test validity : expiration date should be after the first day of the online application ※ More details are stated on <07. Korean Language Requirements> regarding the exemption.									
12	Certificate of English Proficiency Test		Optional		TOEFL iBT, PBT, CBT or IELTS ※ Some departments may require a certificate of English proficiency test as mandatory, please refer to NOTE from <06. Additional Documents and NOTES>. ※ Applicants except for the above departments are optional to submit. ※ Test score validity : expiration date should be after the first day of the online application									
13	Artwork and Statement of Verification for Artwork		Only for those who apply to the specific department that mandate artwork submission		- Noted to check the NOTE for applying departments from <06. Additional Documents and NOTES>. - Statement of verification for artwork will be automatically printed when printing out the online application form (Only for applicants who submit artwork)  [How NOTE is written] - Submit Artwork (Mandatory) : Must submit required artwork (Refer to <06. Additional Documents and NOTES>) - Submit Artwork (Optional) : Submit artwork free of choice (Free-form)									
14	Certificate of Hanyang Alumni		Optional		Certificate of (expected) graduation issued by Hanyang University - Only holders - Those who don't submit this document cannot receive Hanyang Alumni Scholarship									
15	Proof of Renunciation of Nationality		Only for those who have renounced Korean citizenship		Proof of renunciation of Korean citizenship with authorized date and other information indicated (both applicants and his/her parents) - explanation for nationality renunciation and date must be written									

O = Mandatory, △ = Optional, X = No need to submit

Required Documents

Graduate School

No.	Required Documents	MA/MS	Ph.D	Combined (MA-Ph.D)	Details
16	Certificate of entry & exit				From date of birth to starting date of online application.
17	Graduation certificates and transcripts of elementary, middle and high school				Only for the Koreans residing overseas who have completed the entire elementary, middle, high school and undergraduate education outside Korea Submit with one of the below verification : 1) Apostille certification 2) Consular authentication 3) Confirmation from Overseas Koreans Education Information Service ※ Those who have studied at Korean schools overseas that are under the Ministry of Education of Korea are exempted from above verification.

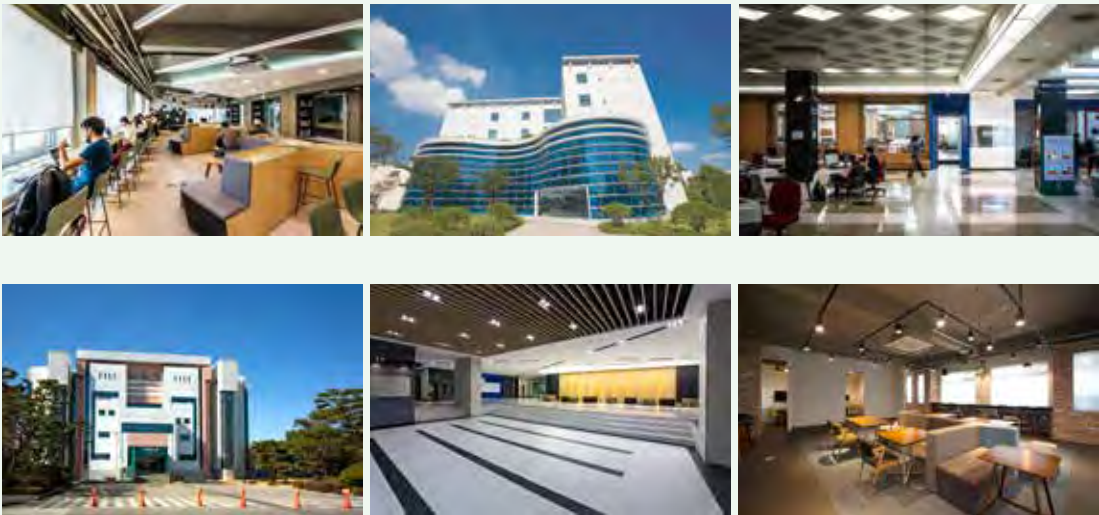
※ Applicants who are applying through Type[B] (completed the entire elementary, middle, high school and undergraduate education outside Korea) are not necessary to submit the NO.10 documents from this list.

Required Documents for those who have transferred or under dual degree program

- 1) University located in Korea : submit original documents without consular's confirmation or Apostile
- 2) University located in China : submit both CHSI certificate and CHSI academic transcript (or consular confirmed transcript)
- 3) University located in other countries : submit original documents with apostille or consular's cofirmation

[Requirements]

Program	Former University	Supporting Documents for Former University		Documents for Final Graduated University
Transfer	4-year College(Dropout)	Certificate of Enrollment or Dropout	Official Transcript	Refer to No. 4~7 from the chart <05. Required Documents>
	4-year College(Graduate)	Certificate of Graduation		
	2,3-year College(Graduate)			
Dual Degree	4-year College	Certificate of Degree		



Additional Documents and NOTES (Specific Majors)

College/Division	Department(Major)	Additional Required Documents / NOTE	
Engineering	Architectural Design	Mandatory	Portfolio
Computing	Human-Computer Interaction	Mandatory	Ph.D Applicants : Submit a summary of Master Thesis
Design	Design(All majors involved)	Mandatory	Submit a Portfolio including both ① & ② submitted by USB ① Artwork ② Video explaining about the submitted artwork (applicant must appear in the video)
Sports and Arts	Applied Music (Composition)	Mandatory	1. Portfolio (One video of your performance of self-composed music or two self-composed music files in USB) – Submit the file in a mp3 format, and mp4 format for the video – Must submit the works of scores 2. Self-introduction video (Applicants must appear on the video and submit it in USB) – Minimum 2 minutes, must be in Korean language
	Applied Music (Vocal)	Mandatory	Portfolio (Two performance video files consisted of self-composed music or self-chosen music in USB)
		NOTE	– Submit the file in mp4 format – Must Include self-introduction (1 minute duration) before singing, and start singing immediately (If the voice of the self-introduction and singing aren't identical, the applicant will automatically be failed) – Only simple reverb effects are allowed. Any audio manipulation such as auto-tuning, pitch tuning, EQ editing, or other modifications to the sound will result in automatic disqualification – Singing with the aid or looking at the music score or lyrics will result in automatic disqualification – Video should be filmed in venues including concert halls, small stages (schools or academies), practice rooms, auditoriums. Any venue of professional recording studio background is not allowed. – The applicants who overlap separate audio file on the video will automatically be failed - Only live recorded audio file will be evaluated. Any suspicion of audio manipulation or procession of the file will result in automatic disqualification
	Applied Music (Instrument)	Mandatory	1. Portfolio (Submit two performance videos of self-composed music in USB) – Submit the file in mp4 format – Must include the name of your major instrument in the file name 2. Self-introduction video (Applicants must appear on the video and submit it in USB) – Minimum 2 minutes, must be in Korean language
Communication & Social Science	Advertising & Public Relations	NOTE	Interview will be conducted if necessary
	Media Informatics	NOTE	Interview will be conducted if necessary
Industrial Convergence	Jazz Music	Mandatory	Submit Artwork
	(Night) Applied Dance	Mandatory	Submit Artwork
	(Night) Convergence Design	Mandatory	Submit Artwork



Evaluation Process  
and Korean Language  
Requirements

Graduate School

Evaluation Process

The entire admission procedure is 100% evaluated with applicants’ submitted documents only.

Evaluated scores are NOT subject to be announced or released in any way.

※ Document Evaluation Standards : ① Statement of Purpose(SOP) ② GPA ③ Other specific evaluations done by each departments

※ There is no Interview Examination done by the International Admissions Team, but each department/major may conduct an interview if necessary.

Korean Proficiency Requirements for Graduate Admission

An admitted student who fails to achieve at least one of the Korean requirements must take a leave of absence. After achieving one, the student may request a return to start taking regular courses.

※ The maximum period for leave of absence is based on the university’s policy

One from below	
	1. TOPIK Level 4 or above
	2. Hanyang IIE Academic Transcript of Level 4 or above
	3. TOPIK IBT Level 4 or above

● **Caution**

1. Exemptions from Korean Language Requirements

- Applicants with Hanyang University supervising(advising) professor’s <Letter of Korean Requirement Exemption>
  - Decided at the professor’s discretion during the Evaluation Process, an individual applicant is not required to submit anything
- Applicants applying for an English Track department/major
- Applicants applying for Russian Studies or Chinese Studies
- Applicants applying for an online degree program

2. Freshmen who should attend Korean Language Courses at ERICA IIE

- Freshmen of Graduate School of Design, Sports and Arts for ERICA Campus

No.	Korean Language Proficiency	Note
①	<ul style="list-style-type: none"><li>TOPIK Level 4 Holders</li><li>completed level 4 at Korean Language Institute of HYU IIE</li><li>Exemption Letter Holders</li></ul>	<div>Mandatory to attend more than 200 hours of Korean Language courses at ERICA IIE</div> <ul style="list-style-type: none"><li>allowed to attend with degree courses for the first admitted semester so that the Leave of absence is not required</li><li>language course tuition will be fee charged and borne by students themselves</li></ul>
②	<ul style="list-style-type: none"><li>TOPIK Level 5 or higher Holders</li><li>completed level 5 or higher at Korean Language Institute of HYU IIE</li></ul>	exempt from the above mandatory course

- If accepted candidates are under any one of the option ①, must attend Korean courses as mentioned in NOTE.
- Additional supporting documents can be submitted before the first semester begins, and can be exempt from the above course if the submitted documents are under one from option ②.
- For TOPIK Level 3 or lower holders are excluded from above ①, must take a leave of absence until satisfying the Korean proficiency standard and then re-register for starting the degree program.

3. Korean Government Scholarship Program (KGSP) students should follow the Korean Standards enacted by NIIED.

Scholarships for  
International  
Students

(Only one scholarship is allowed)

For newly admitted students

※ Only documents submitted during the official application period are eligible for consideration for the scholarship.

Scholarship	Application Period								
<div><div>● Hanyang International Scholarship Program (HISP) - Graduate</div><div>Among applicants those with excellent grades at their final university are selected based on overall scholastic achievement.</div><div>A. Qualification: GPA from the previously attended institution must be 80 or higher when converted to a 100 scale</div><div>B. Benefit:</div><table><tr><th>Type</th><th>Benefit</th></tr><tr><td>HISP 100%</td><td>100% reduction in tuition and admission fees</td></tr><tr><td>HISP 70%</td><td>70% reduction in tuition</td></tr><tr><td>HISP 50%</td><td>50% reduction in tuition</td></tr></table><div>C. Scholarship period: Master 4 semesters / Ph.D 4 semesters / MA-Ph.D 6 semesters (excluding extended study period and research registration)</div><div>D. Requirement: Scholarship recipients must achieve a minimum of 3.0 GPA each semester in order to retain their scholarship.</div><div>※ The number of grantees may differ every semester.</div><div>※ Those who don't submit Certificate of GPA converted into 100 scale or percentage will not be eligible for the HISP scholarship</div></div>	Type	Benefit	HISP 100%	100% reduction in tuition and admission fees	HISP 70%	70% reduction in tuition	HISP 50%	50% reduction in tuition	
Type	Benefit								
HISP 100%	100% reduction in tuition and admission fees								
HISP 70%	70% reduction in tuition								
HISP 50%	50% reduction in tuition								
<div><div>● Hanyang Scholarship for Excellence in Language Proficiency - Graduate</div><div>Hanyang Scholarship for Excellence in Language Proficiency is awarded to applicants who have passed the TOPIK level 5 or 6, or achieved a TOEFL iBT score of 90 or higher or IELTS score of 6.5 or higher.</div><div>(Only documents submitted during the official application period are acceptable.)</div><div>A. Benefit: 30% reduction in tuition</div><div>B. Scholarship period: The first semester only</div><div>※ TOEFL and IELTS score are not applicable to native speakers of English.</div></div>	Selected during the admission process (no need to apply)								
<div><div>● Hanyang Scholarship for Engineering and Science Students</div><div>Hanyang Scholarship for Engineering and Science Students is awarded to international students who gain admission to the graduate school of engineering and science. (It is not necessary for applicants to submit a letter of recommendation.)</div><div>A. Benefit: 50% reduction in tuition and 50% reduction in admission fees</div><div>B. Scholarship period: Master 4 semesters / Ph.D 4 semesters / MA-Ph.D 6 semesters (excluding extended study period and research registration)</div><div>C. Requirement: Scholarship recipients must achieve a minimum of 3.0 GPA each semester in order to retain their scholarship.</div></div>									
<div><div>● GSIS (Seoul), Industrial Convergence (ERICA) scholarship for international students</div><div>This scholarship is awarded to international students who get accepted to the Graduate School of International Studies (Seoul) and Industrial Convergence (ERICA).</div><div>A. Benefit:</div><div>- Graduate School of International Studies: 20% reduction in tuition</div><div>- Graduate School of Industrial Convergence: 30% reduction in tuition</div><div>B. Scholarship period: Master 4 semesters / Ph.D 4 semesters (excluding extended study period and research registration)</div><div>C. Requirement: Scholarship recipients must achieve a minimum of 3.0 GPA each semester in order to retain their scholarship.</div></div>									
<div><div>● Hanyang Alumni Scholarship</div><div>Hanyang Alumni Scholarship is awarded to international students who graduated from Hanyang University degree program.</div><div>A. Benefit: 50% reduction in tuition and 50% reduction in admission fee</div><div>B. Scholarship period: Master 4 semesters / Ph.D 4 semesters / MA-Ph.D 6 semesters (excluding extended study period and research registration)</div><div>C. Requirement: Scholarship recipients must achieve a minimum of 3.0 GPA each semester in order to retain this scholarship.</div><div>※ Those who don't submit Certificate of graduation from Hanyang University cannot be awarded Hanyang Alumni Scholarship.</div></div>	Need to enter your previous student ID number and submit requirement when applying								
<div><div>● Hanyang Bridge Scholarship</div><div>This scholarship is awarded to international students who have participated in exchange or visiting program at Hanyang University.</div><div>A. Benefit: 50% reduction in tuition</div><div>B. Scholarship period: The first semester only</div><div>※ Must submit supporting documents (certificate/transcript) to prove on the participation in Hanyang Exchange or visiting program.</div></div>	Need to enter your Hanyang student ID number and submit necessary document when applying								

※ The offered scholarship may be canceled if the degree program is changed during the academic period(MA/MS → MA&Ph.D. combined OR MA&Ph.D. combined → MA/MS)

Scholarships for International Students  
(Only one scholarship is allowed)

Graduate School

Graduation Requirements

Scholarship	Application Period
<div>● Online Degree Program Scholarship</div> <div>This scholarship is awarded to international students who are admitted to Online Degree Program.</div> <div>A. Benefit: 50% reduction in tuition fee or 70% reduction in tuition fee if selected through a comprehensive evaluation</div> <div>B. Scholarship period: 4 semesters</div> <div>C. Requirement: Recipient must achieve minimum of 3.0 GPA each semester in order to maintain their scholarship.</div> <div>※ 100% reduction in the first semester's tuition fee when entering our Ph.D. program after graduation (admission fee will not be included)</div>	Automatically selected during the admission period
※ The offered scholarship may be canceled if the degree program is changed during the academic period(MA/MS → MA&Ph.D. combined OR MA&Ph.D. combined → MA/MS)	

For registered students

Scholarship	Application Period																
<p>● <b>Hanyang International Excellence Awards (HIEA) - ERICA</b></p> <p>HIEA is awarded to international students who have achieved notable academic progress at Hanyang University.</p> <p>A. Qualification: Students with a valid TOPIK level certificate of any level and Insurance who achieved a minimum GPA of 4.0 out of 4.5 in the previous semester</p> <p>B. Recipients are selected by documents screening. Recipients will receive 100%, 70%, 50% or 30% tuition reduction according to their evaluation results.</p> <p>C. Scholarship period: One semester</p> <p>D. Required Documents: to be announced at OIA website</p> <p>E. Caution: Korean nationals are not eligible</p>	Apply during semester																
<p>● <b>TOPIK Scholarship(ERICA)</b></p> <p>A. Application Requirements</p> <p>① International students enrolled in a degree program at Hanyang University ERICA campus.(Korean nationals not eligible)</p> <p>② Students who obtained a higher TOPIK score compared to the previously submitted TOPIK certificate during admission applications or the previous TOPIK scholarship application period.</p> <p>③ Students exempted from application: applicants of the last TOPIK exam, prospective graduates, students on leave of absence, students who extended graduation, students who fulfilled all graduation requirements, exchange/visiting students, students enrolled in the International Institute of Education (Korean Language Course etc.), students who have submitted TOPOIK Level 6.</p> <p>B. Scholarships</p> <p>① Scholarship Criteria</p> <table><tr><th>Criteria</th><th>Scholarship</th><th>Awarding Standards</th></tr><tr><td rowspan="2">College of Performing Arts and Sport</td><td>700,000 KRW</td><td>Non-TOPIK Holder or TOPIK Level 2 or below → TOPIK Level 3 and above</td></tr><tr><td>500,000 KRW</td><td>TOPIK Level 3 and above → TOPIK Level 4 and above</td></tr><tr><td rowspan="2">Colleges other than Performing Arts and Sport</td><td>700,000 KRW</td><td>Non-TOPIK Holder or TOPIK Level 3 or below → TOPIK Level 4 and above</td></tr><tr><td>500,000 KRW</td><td>TOPIK Level 4 and above → TOPIK Level 5 and above</td></tr><tr><td>Application Fee (All departments)</td><td>55,000 KRW</td><td>You may still apply even if you fail the test, or obtain lower or equivalent grades after your original submission</td></tr></table> <p>② Limited for students who have acquired higher TOPIK scores than the previously submitted TOPIK results.</p> <p>③ Students with other on-campus scholarships may apply as well.</p> <p>C. Application Instructions: Online Application (Please refer to the notice on Office of International Affairs homepage)</p> <p>D. Application Documents: Newly acquired TOPIK certificate.</p> <p>E. Application Period: After every TOPIK results announcement</p>		Criteria	Scholarship	Awarding Standards	College of Performing Arts and Sport	700,000 KRW	Non-TOPIK Holder or TOPIK Level 2 or below → TOPIK Level 3 and above	500,000 KRW	TOPIK Level 3 and above → TOPIK Level 4 and above	Colleges other than Performing Arts and Sport	700,000 KRW	Non-TOPIK Holder or TOPIK Level 3 or below → TOPIK Level 4 and above	500,000 KRW	TOPIK Level 4 and above → TOPIK Level 5 and above	Application Fee (All departments)	55,000 KRW	You may still apply even if you fail the test, or obtain lower or equivalent grades after your original submission
Criteria		Scholarship	Awarding Standards														
College of Performing Arts and Sport		700,000 KRW	Non-TOPIK Holder or TOPIK Level 2 or below → TOPIK Level 3 and above														
	500,000 KRW	TOPIK Level 3 and above → TOPIK Level 4 and above															
Colleges other than Performing Arts and Sport	700,000 KRW	Non-TOPIK Holder or TOPIK Level 3 or below → TOPIK Level 4 and above															
	500,000 KRW	TOPIK Level 4 and above → TOPIK Level 5 and above															
Application Fee (All departments)	55,000 KRW	You may still apply even if you fail the test, or obtain lower or equivalent grades after your original submission															
※ Scholarship information for registered students is subject to change based on changes in the school's scholarship regulations. Please check again after admission for more information.																	

Details can be found through the department or graduate schools' website links provided in <01. Admission Unit>.

Tuition Fee  
Based on Spring 2024, subject to change based on university policy.

General Graduate School

KRW(₩) / per semester

College/School	Tuition	Admission Fee	Department (Major)
Humanities- Social Science	6,583,000	1,030,000	Language and Culture, Communication & Social Science, Business and Economics, Interdisciplinary Courses (Culture Contents, Genre Technology and Subculture)
Natural Science- Physical Education	7,756,000	1,030,000	Science and Convergence Technology, Sports and Arts (Sport Science)
Engineering	8,814,000	1,030,000	Engineering Sciences, Computing, Interdisciplinary courses (Smart City Engineering, Interdisciplinary Robot Engineering Systems)
Fine Arts- Music	9,022,000	1,030,000	Design, Sports and Arts (Performing Arts, Applied Music)
Pharmacy	9,156,000	1,030,000	Pharmacy

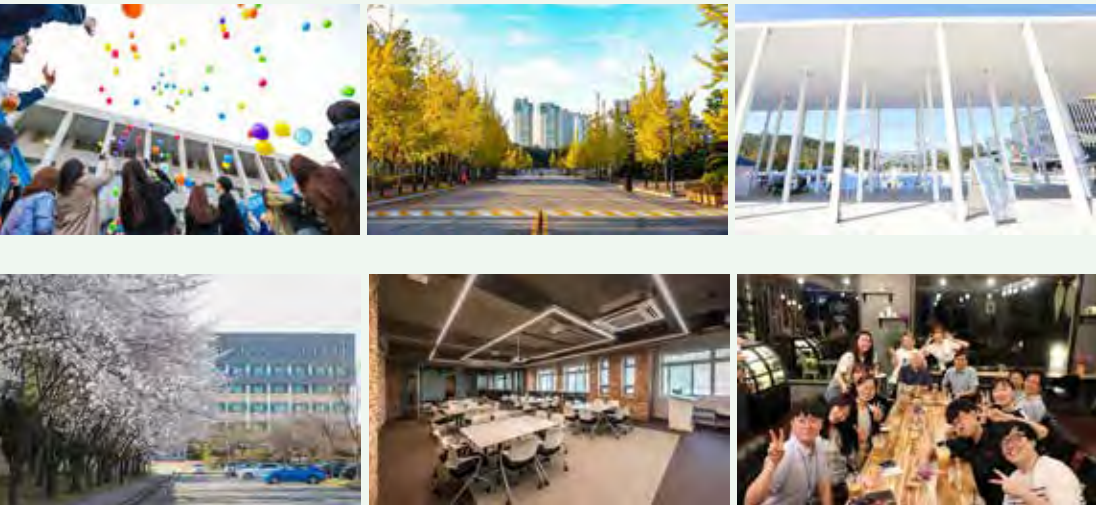
Professional/Specialized Graduate School

KRW(₩) / per semester

College/School	Tuition	Admission Fee	Department (Major)
Industrial Convergence (Humanities-Social Science)	6,376,000	1,030,000	Specialized Graduate School(Business Administration, Cultural Contents, Jazz Performance, Applied Dance)
Industrial Convergence (Natural Science)	7,347,000		Specialized Graduate School(Convergence Design)

\* Regarding Application Fee Refund

1. To maintain fairness of the admission process and to minimize any impacts on other applicants, an application cannot be cancelled after the Online Application Period.
2. Application fee may be 100% refunded if the applicant decides to cancel his/her application during the Online Application Period.
3. If an applicant fails to submit the required documents during the Documents Submission period under certain circumstances(natural disaster, issues with Hanyang University, hospitalization of the applicant due to sickness/disease/accident, death of the applicant), the application fee may be 100% refunded after deemed not to compromise the fairness of the admission process. However, after the end of the Documents Submission Period, the application fee is NOT refunded.





Apostille Certification and Consular Authentication

[1] Introduction for submitting a document to prove the academic history from overseas institutions

- All applicants except those who have graduated in China must submit an official diploma or degree and an official academic transcript verified by one of the following verification method stated below during the designated period.
- 1. Apostilled Official diploma or degree and official academic transcript
  - 2. Official diploma or degree and official academic transcript verified by a Korean Embassy

[2] Information on Apostille Convention

1. Apostille Convention
- 1) The Republic of Korea became the 90<sup>th</sup> Contracting State of the Apostille Convention (Convention Abolishing the Requirement of Legalization for Foreign Public Document), effective as of July 14, 2007
  - 2) Apostille is a certificate specifying the modalities through which a document issued in one of the signatory countries can be certified for legal purposes in all the other signatory states
  - 3) Apostille convention countries abolish the complex consular procedures to ensure the mutual authentication of public and official documents (Apostilled documents have the same effect as documents verified by diplomatic offices)
2. Apostille Convention is an international treaty drafted by the Hague Conference on Private International Law: You can check out detailed updated information regarding regional authorities at [www.hcch.net](http://www.hcch.net)

[3] The procedure of issuing Apostille



[4] Apostille Convention countries (2024)

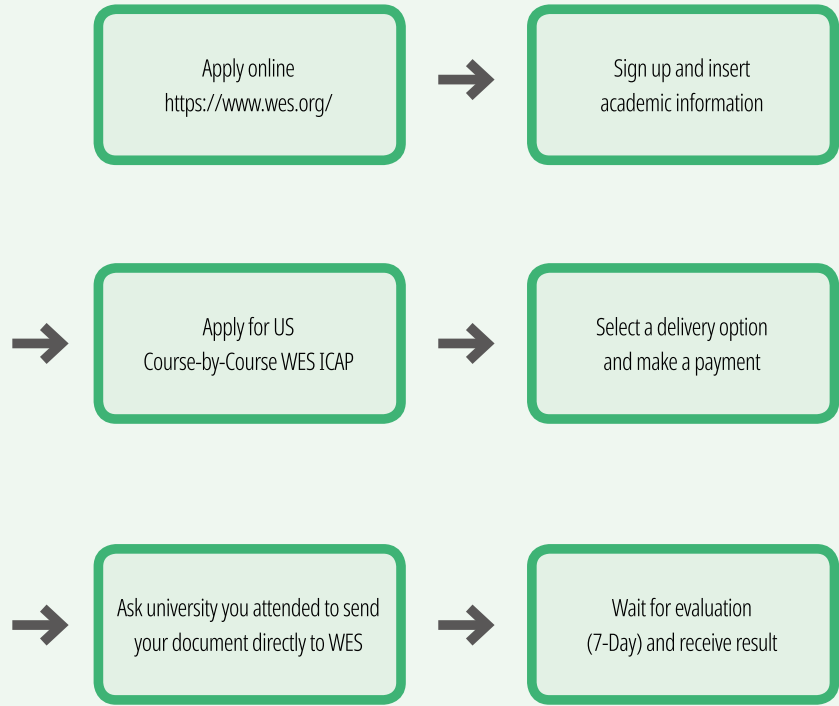
Area	Country/Region
Asia and Oceania	New Zealand, Niue, Marshall Islands, Mauritius, Mongolia, Vanuatu, Brunei, Samoa, Singapore, Australia, India, Indonesia, Japan, China (including Macau and Hong Kong), Cook Islands, Tajikistan, Tonga, Pakistan, Palau, Fiji, Philippines, Korea
Europe	Georgia, Greece, Netherlands, Norway, Denmark, Germany, Latvia, Russia, Romania, Luxembourg, Lithuania, Liechtenstein, North Macedonia, Monaco, Montenegro, Moldova, Malta, Belgium, Belarus, Bosnia and Herzegovina, Bulgaria, Cyprus, San Marino, Serbia, Sweden, Switzerland, Spain, Slovakia, Slovenia, Armenia, Iceland, Ireland, Azerbaijan, Andorra, Albania, Estonia, United Kingdom, Austria, Uzbekistan, Ukraine, Italy, Czech Republic, Kazakhstan, Kosovo, Croatia, Kyrgyzstan, Turkey, Portugal, Poland, France, Finland, Hungary
North America	United States (including Guam, Mariana Islands, Saipan, Puerto Rico), Canada
Latin America and the Caribbean	Guyana, Guatemala, Grenada, Nicaragua, Dominican Republic, Commonwealth of Dominica, Mexico, Barbados, Bahamas, Venezuela, Belize, Bolivia, Brazil, Saint Lucia, Saint Vincent, Saint Kitts and Nevis, Suriname, Argentina, Antigua and Barbuda, Ecuador, El Salvador, Honduras, Uruguay, Chile, Costa Rica, Colombia, Trinidad and Tobago, Panama, Peru, Paraguay, Jamaica
Africa	Namibia, South Africa, Liberia, Lesotho, Malawi, Botswana, Sao Tome and Principe, Senegal, Seychelles, Eswatini, Cape Verde, Burundi, Tunisia
The Middle East	Morocco, Bahrain, Saudi Arabia, Oman, Israel

WES ICAP (For Graduate School Applicants who want to submit GPA Certification)

[1] Information on WES

- Institution: WES (World Education Service)
- Web: <https://www.wes.org/>
- Address: Documentation Center P. O. Box 5087 Bowling Green Station, New York, NY 10274-5087, USA
- Contact: 1- 212-966-6311
- Cost: \$205.00 (Price does not include delivery or additional fees)

[2] The procedure of issuing WES ICAP



※ Please visit following website for detailed information.  
[www.wes.org/evaluations-and-fees/education/graduate-admissions/](https://www.wes.org/evaluations-and-fees/education/graduate-admissions/)



### Dormitories

KRW(₩) / per semester			
Type	Name of Dorm	Room Type	Fee (6 months)
On-campus	Injae Hall	Room for 1 person (private bathroom)	2,578,000 (USD2,023/CNY14,015)
		Room for 2 people (shared bathroom)	1,290,000(USD1,012/CNY7,013)
	Changeui Hall	Room for 1 person (private bathroom)	2,745,000(USD2,154/CNY14,923)
		Room for 2 people (private bathroom)	1,805,000(USD1,416/CNY9,812)

※Figures are based on the 2024 exchange rate, and thus the exact amount of fees are subject to change.

### Dormitory Administration Team contact info

Office : ERICA Residence Hall  
 Website : <http://hydorm.hanyang.ac.kr/>  
 Phone : +82-31-400-4375,4378,4379  
 Address : Hanyang University ERICA Campus Residence Hall, 55 Hanyangdaehak-ro, Sangnok-gu, Ansan City,  
 GyeongGi Province 15588 South Korea

※ This guideline is originally written in Korean and translated into other languages. The Korean guideline prevails over translated versions if any conflicts occur in the interpretation.

### Campus photos



Main building



Lake garden



Dormitory



Main entrance



Convention Center



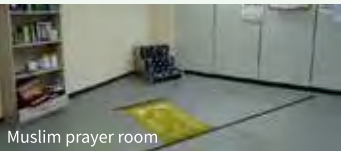
Dorm room



Laundry room



Fitness room

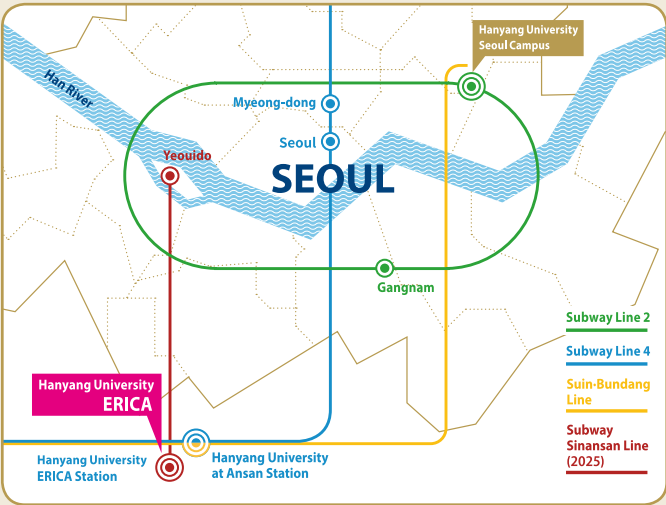


Muslim prayer room



Muslim kitchen

### Location



### HANYANG UNIVERSITY ERICA

| 55 Hanyangdaehak-ro, Sangnok-gu, Ansan, Gyeonggi-do, 15588, Korea

Website. [studyerica.hanyang.ac.kr](http://studyerica.hanyang.ac.kr)  
 E-mail. [studyerica@hanyang.ac.kr](mailto:studyerica@hanyang.ac.kr)  
 Tel. +82-31-400-4912~4920

- Hanyang University at Ansan Station  
 (Subway Line No.4, Suin-Bundang Line)
- Hanyang University ERICA Station  
 Subway Route Sinansan Line is scheduled to open by 2025  
 (25 minutes from Yeouido to the ERICA)
- 30km away from Gangnam (40 minutes by bus or subway)
- 45km away from Myeongdong (60 minutes by bus or subway)



- 101 Administration Building  
 (Office of Admissions Admissions Division)

102 Student Welfare Building

103 Student Union

104 Engineering Building II

105 Architectural Design Hall

106 Structural Experiment Laboratory

107 Environment Experiment Center

108 Hydraulics Lab

109 Design Culture Hall

110 Design Education Hall

111 Design Research Hall

112 Smart Manufacturing Learning Factory

201 Business and Economics Hall
- 202 International Culture Building

203 R.O.T.C.

204 Communication and Social Sciences Hall

205 Sciences and Technology BuildingI

206 Conference Hall

207 Sciences and Technology Building II

208 HY ERICA Institute of Precision Therapeutics

209 Educational Building I

301 Engineering Building I

302 Facilities Management Building

303 Engineering Building III

304 Engineering Building IV

305 Engineering Building V

306 Bus Stop and Student Lounge (Shuttlecoke)
- 307 ERICA Convention Center

308 Hanyang Business Incubator

309 Pharmacy Building

310 Animal Experiment Laboratory

311 ERICA Support Center

312 Industry-University Cooperation Foundation

314 Applied Research Center for Electro-Fusion Technology(EFT Center)

315 BMR Center

316 Lion's Hall

401 Academic Information Center and Library  
 (Career Development Center)

402 Gymnasium
- 403 ERICA Music Hall

404 Sports ground

405 Tennis Courts

501 Student Residence Hall I

502 Student Residence Hall II

503 Student Residence Hall III

504 Residential College

C01 Gyeonggi Techno Park

C02 Korea Testing Laboratory

C03 KITECH

C04 Korea Electrotechnology Research Institute

C05 LG Innotek Ansan R&D Laboratory



# Hanyang University ERICA English Track Programs

English track programs have been created in the **Department of Business Administration** and **Department of Economics** at the ERICA Campus. In these tracks, all courses are conducted in English.

## Advantages of the ERICA English Track Programs



### IC-PBL: A learner-centered educational model

Students solve context-rich problems found in real-life, coupled with programs involving collaboration with certain industries, society, and the university.



### AACSB accreditation

Less than 5% of all business schools in the world have gained the coveted AACSB accreditation.



### Global Experiences

Students can participate in various study abroad programs (dual-degree, exchange, etc.)



### Mentoring

Special mentoring programs and cultural activities are available specifically for international students.



### Career Development

Potential employment is available at various agencies, public/private companies, financial institutions, in academia, research institutes, start-ups, etc.



See page 21 to know more about the **ERICA English Tracks!**